

Fiscal Year 2021 Annual Report
Student Life and Auxiliary Departments
Associate Vice President for Student Life



CAMPUS HEALTH CLINIC / CAMPUS LIFE AND EVENTS SERVICES
CHARTWELLS DINING SERVICE / GREEK LIFE
OFFICE OF MILITARY & VETERANS SERVICES
RECREATION SERVICES / REDHAWK FOOD PANTRY
OFFICE OF RESIDENCE LIFE / SOUTHEAST BOOKSTORE
STUDENT GOVERNMENT / TEXTBOOK RENTAL

TABLE OF CONTENTS

Campus Health Clinic	6
Campus Life and Events Services	7
<i>Student Life and Leadership Awards</i>	10
Chartwells	17
Greek Life	21
<i>5 Star Program</i>	24
<i>Greek Week Awards</i>	25
Office of Military and Veterans Services	29
Recreation Services.....	32
Residence Life	40
<i>Occupancy</i>	41
<i>Learning Communities</i>	49
Southeast Bookstore.....	54
Student Auxiliary Services.....	57
Student Government	59
Textbook Rental	61
<i>Redhawk Food Pantry</i>	68
Appendix A, Homecoming Parade, Window, Yard, & Banner Winners.....	69
Appendix B, Man & Woman of the Year, Overall Homecoming Winner.....	72
Appendix C, NPHC Step Show/Yard Winners.....	76
Appendix D, Greek Governing Council (<i>IFC, NPC, NPHC</i>) Presidents.....	77
Appendix E, Greek Fraternity and Sorority of the Year	79
Appendix F, Greek Five Star Awards History	80
Appendix F, Greek Week Pairing and Themes.....	81

Associate Vice President Year in Review

The Office of Student Life works with a variety of different offices to provide a multitude of services and programs to the Southeast Missouri State University community. During fiscal year 2021 the campus continued to be challenged with the response to the worldwide COVID-19 pandemic, however, the campus-maintained face to face classes and in this academic year we saw a return to many traditional programs and events. Other details?



The success of programs and services within all the offices represented in this annual report are the result of efforts by many committed professionals. Outlined below are the graduate assistant, clerical/technical, and professional staff that deserve the credit for each success outlined in this program and for being competent professionals in responding to the fiscal challenges experienced in fiscal year 2021.

Campus Health Clinic

Kim Dennis, Rachael Jenkins APRN, FNP-BC, Christina Martin RN, Tameka Ballentine

Campus Life and Events Services

Michele Irby, Gretchen Grojean, Joanna Shaver, Tiffany Comfort, Jim Essner, Andrea Buerck, Brittany Panus,

Chartwells

Matthew Ludwig, Cheryl Graf, Alicia Ticer, Christie McIntosh, Kevin Yarborough, Rukhsar Arzoo, Shu Joshgani, Kierstin Brown, Rosebud Palermo

Greek Life

Bruce Skinner, Sabina Tapscott, Matt Rolwing

Office of Military and Veterans Services

Amanda Woods, Katie Friese

Office of Residence Life

Kendra Skinner, Allan Mauk, Neil Conrad, Kim McElroy, Allie Wisker, Garrett Downing, Clint Ashner, Curtis Burton, Jacki Lynch, Caitlin Reicher, Holly Ritter, Ahmed Salehin, Mikayla Patterson

Recreation Services

Eric "Red" Redinger, Chad Sierman, Tyler McClemore, Hannah Weathers, Kim Butler, Raleigh Davis, Michael Cope, Olivia Jones.

Southeast Bookstore

Barbara Breedon, Tina Wright

Textbook Rental

Jane Kurre, Cindy Balsmann

Underlined names reflect the staff member responsible for the overall operation of the department.

I look forward to the coming academic year and remain thankful for the students, staff, and programs that I am fortunate to work with.

A handwritten signature in black ink that reads "Bruce Skinner". The script is fluid and cursive, with the first letters of "Bruce" and "Skinner" being significantly larger and more stylized than the rest of the letters.

Bruce Skinner, Ed.D, CASP

Associate Vice President for Student Life

Campus Health Clinic

Beginning in 2008, the University and Southeast Missouri Hospital (now Southeast HEALTH) partnered to provide health services to students and employees of the University. The clinic provides primary medical care to the students, faculty, and staff via



Registered Nurses, Licensed Practical Nurses and Advanced Practice Nurse Practitioners. Services include health treatment such as physical exams, laboratory services, immunizations, and allergy shots, medical procedures, prescription services, special equipment needs (ice packs/crutches); well women exams and assessment and treatment for any illness/injuries. Students and employees can have the services provided billed to insurance, the Clinic is required to accept the University's health care insurance provider, can self-pay or have their balance assessed against their student/employee account.

During the fiscal year the Campus Health Clinic provided COVID testing via appointment. Beginning in November 2020 the Campus Health Clinic began tracking tests administered and positive tests. From November 9, 2020 through May 20, 2021 the Clinic administered 493 tests with 139 being positive.

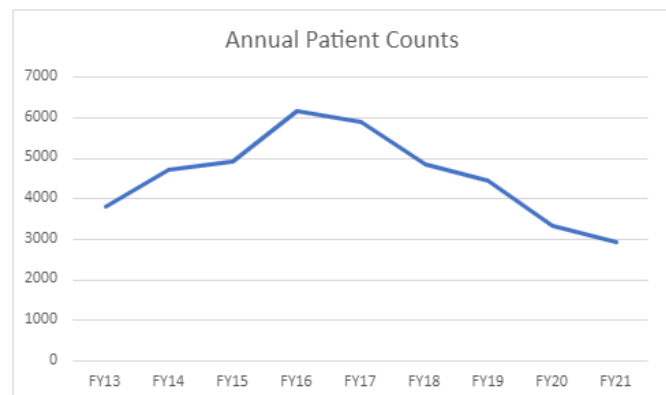
Contract Details

- All employees, services, and equipment are provided by Southeast HEALTH.
- The University permits all charges not covered by insurance or self-pay to be charged against a student or employee's account.
- Students are not required to have health insurance or show ability to pay in order to receive medical services.
- The University guarantees to cover losses at the Clinic up to \$145,000 annually. Any loss above \$145,000 is shared equally. Any profit from the Clinic's operation is shared equally.
 - Operating loss FY21, \$117,682
 - Operating loss FY20, \$109,519
 - Operating loss FY19, \$145,987

Usage

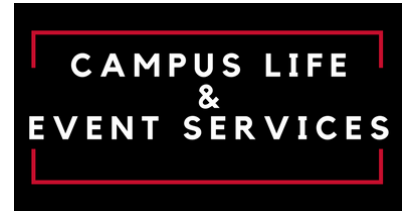
Patient counts for the past three years:

- FY21, 2,951
- FY20, 3,326
- FY19, 4,447



Campus Life and Events Services

Campus Life and Event Services has responsibility for the co-curricular educational experience of all Southeast Missouri State University students. This responsibility includes programs for leadership development, social engagement, community service, social justice topics, and leadership for the student organizations.



The office reduced its staff during the year with the resignation of the Coordinator for Campus Programming and the Campus Life Business Analyst. The duties of these two staff members were reassigned to others on the team.

Mission

Campus Life & Event Services creates programs, facilities, and services that provide opportunities that foster engagement, growth, and development of students as well as connections to the campus and the community.

Campus Advising

- The Director of Campus Life serves as the adviser for Student Government
- The Coordinator for Leadership and Involvement serves as the adviser to the First-Year Leadership Program, Camp Redhawk, Emerging Leader and President's Leadership Academy programs

Major Campus Life Programs and Events

- Camp Redhawk
- Carpe Diem
- Emerging Leaders
- Family Weekend
- First-Year Leadership Program
- Homecoming
- Martin Luther King Planning Committee
- President's Leadership Committee
- Southeast Serves
- Student Life and Leadership Awards

Programs and Accomplishments

All programming for FY21 was impacted by Covid-19. The events were redesigned, socially distanced, became virtual or were cancelled. The modified programming for the year was as follows

Opening Week The kick-off of the academic year allowed for many opportunities to engage our students.

- | | | |
|----------------|------------------------|--------------|
| • Move-In Bash | Roller Rave | 254 students |
| | Bingo | 57 students |
| | Bring It On (streamed) | 33 students |
| • Karaoke | | 58 students |

Engagement Day programs:

- Involvement Fair /Ice Cream Pigout 650 students and 72 organizations
- Tie Dye 125 students
- SE Serves Crafts 20 students
- Canvas Painting 175 students
- Welcome Back Movie-*Bad Boys for Life* 95 students
- Free Money Gameshow 107 students

Family Weekend The annual event was cancelled for September 25-27, 2020. Instead, the campus hosted a series of videos to help share the campus with families. They included a message from Dr. Vargas, tours of residence halls, a behind the scenes look at athletics and a history of the Academic Dome (and a tour). On Saturday evening we hosted a virtual Trivia Contest where students could play in person, remotely from their rooms and families could log-in and play from anywhere!

Carpe Diem The annual cultural celebration attracting hundreds of attendees was not held as usual in the Student Recreation Center due to COVID-19 precautions. However, a number of virtual and in-person events and activities were planned in collaboration with the Office of International Education & Services to celebrate cultural diversity at SEMO throughout November, during which time International Education Week (IEW) is observed in the U.S. The main event was an International Trivia Night to participate in virtually or in-person in the University Center Ballroom to compete for gift cards to the University Bookstore. Approximately 30 students attended in person and 10 joined to play virtually. Campus Life also organized a Nailed It! Baking Challenge offering 25 free bags of ingredients with the recipe to bake a German pastry and decorate it in the theme of “Carpe Diem: celebrating cultural diversity”. From the few photo submissions, the one voted best decorated received a gift certificate to a local Taiwanese bubble tea café. Other events included an International Film Series with a different movie on Canopy screened live in Rose Theater every Thursday followed by panel discussion with cultural experts from the SEMO community. Chartwells on-campus dining also prepared a different international dish every Tuesday and Thursday to include in the buffets at Towers and River Campus dining locations. Members of cultural groups created and uploaded to our CARPE DIEM & IEW Stream Channel videos of music and dance performances, cultural presentations, fashion shows, and cooking tutorials of cultural dishes, and select videos were published on the University’s social media accounts.

Homecoming The theme for Homecoming 2020 was to be *Destination: SEMO* and to be hosted on October 31, 2020. As the events were cancelled, we hosted a SEMO Spirit Week instead. The week of events included pumpkin carving, a blood drive, wearing your favorite Spirit Gear, an

office decorating competition, a tie dye event, and of course, the annual Man and Woman of the Year competition.



A complete list of Homecoming Awards and winners, can be found in Appendix A & B.

- Appendix A includes the parade, window art, yard art, and banner winners since 1999.
- Appendix B includes the Man and Woman of the Year winner, including all finalists and the first, second, and third place winners for overall Homecoming since 1996.
- Fall 2020 Homecoming Yard Show Winners were Zeta Phi Beta and Alpha Phi Alpha.

Community Service Volunteerism and service have become a major focus for Campus Life & Event Services. Highlights of the program were:

- The annual Fall Volunteer Fair was not held on just one day. In an attempt to space out the events, over five weeks two agencies were hosted each Wednesday in the University Center or on the front patio.
- Monthly service projects were put on hold as most agencies were not accepting volunteers. However, in October a drive-thru Trunk-or-Treat was co-sponsored with Vandiver Hall and Gamma Sigma Sigma in Capaha Park. It had a Candyland theme and drew families from all over the Cape Girardeau/Jackson area.
- SE Serves program conducted fundraisers through Textbook Rental and Walmart to alleviate departmental and participant cost.



Southeast Serves Weekend was held April 23-24, 2021. There were 12 service events held over the two days with over 20 student organizations providing volunteers. We received great feedback on our volunteers such as this testimonial from Jocelyn Anderson one of the coordinators of Caffeinated in Cape:

I just wanted to send you a note and share how thankful and impressed I was with our volunteers! I've been gathering feedback from the businesses that were involved and most everyone I've heard from was

really happy to have the help. I also want to call out Tyler, he was the volunteer that was assigned to my store. OMG! AMAZING! I cannot say enough good things about this young man, he jumped right into the mix and was taking on tasks without anyone asking him too. He was so kind and respectful and was even able to help describe our sample products to event attendees when things were really busy. Thank you so much for your help in partnering us up with volunteers for this event.

Campus Leadership Program

Students have opportunities for leadership development at different levels of their undergraduate experience, beginning with Camp Redhawk the summer before attending Southeast, followed by the First-year Leadership Program (FYLP) in the fall semester, and Emerging Leaders (EL), a spring-semester program for first and second-year undergraduates. The top tier of our Southeast Leadership Programs is the President’s Leadership Academy (PLA) for up to 20 experienced junior and senior campus leaders selected by application.



Camp Redhawk Camp Redhawk is a summer leadership camp designed for new students preparing to enter their first semester at Southeast Missouri State University. The program offers an introduction to campus life and traditions, immersion into school spirit, and a chance for campers to meet other students.

Program	Participation time period	Participation
<i>Camp Redhawk</i>	Summer before classes	166 participants (three sessions offered)
<i>First Year Leadership Programs FYLP</i>	First semester	83 participants graduated
<i>Emerging Leaders</i>	2 nd semester or Sophomore year	38 participated/ 32\7 graduated
<i>Presidents Leadership Academy</i>	Junior or Senior year	Suspended for FY20

Student Life and Leadership Awards

The Student Life and Leadership Awards honor student leaders, student organizations, and University professionals who support the intellectual, professional, personal, social, and cultural needs of the community. The Provost Awards for Teaching Excellence awarded to faculty are also included in this awards program. Due to COVID-19, in lieu of our usual banquet to celebrate the award winners, two separate ceremonies were organized to present plaques to award recipients.

President's Spirit of Southeast Award

Kate Appleman
Morgan Kaplan
Maja Lundell
Anna Ockel
Anthony Shepard



First-Year Student Awards

Travis Czarnecki
Sheanique Syms

University Contributor Awards

Beth Glaus – Staff, Director of Public Safety
Shanté Hanna – Student

Student Life Achievement Recognition Awards

Dr. Ecaterina Stepaniuc – Faculty, Holland College of Arts and Media: Department of Mass Media
Bill Brucker – Staff, Locksmith for Facilities Management
Johanna Oster – Student

Civil & Global Engagement Awards

Emily Denlinger – Faculty, Holland College of Arts and Media: Department of Art and Design

Dr. Steven J. Hoffman – Faculty, College of Humanities and Social Sciences: Department of History and Anthropology

Holland College of Arts and Media's Diversity and Inclusion Committee: Dr. Joseph L. Jefferson, Chair; Dr. Tamara Zellars Buck; Josh Harvey; Dr. Sophia Han; Benjie Heu; Roxanne Wellington; Anthony Shepard
Shadan Roumany – Student

Outstanding Student Organization Awards

National Panhellenic Council
Outdoor Adventure Club
The Arrow

Outstanding Advisor Award

Dr. Thomas Holman – Outdoor Adventure Club



Provost Awards

Holland College of Arts and Media; Yul Carrion
Harrison College of Business and Computing; Clay Wittig
College of Education, Health, and Human Studies; Jennie Ellsworth

College of Humanities and Social Sciences; Kaitlyn Barnett
College of Science, Technology, Engineering, and Mathematics; Landon Schnurbusch
Graduate Category; Augusta Welsh – College of Humanities and Social Sciences

Experiential Learning Awards

Holland College of Arts and Media

Catapult Press Students, Led by Hannah Sanders

Tunuke Abudukamali, Logan Blankenship, Bailey Lawless, Ryan Nevill, Christian Ondr, Kolebe Shanks, Wendell Stapleton

Harrison College of Business and Computing

Zachary Hall

College of Education, Health, and Human Studies

Leah Harris

College of Humanities and Social Sciences

Forensic Anthropology Cold Case Team, Led by Dr. Jennifer Bengtson

Miranda Ballard-Eddy, Dakota Black, Meghan Cook, Briony Ferguson, Kayla Gutierrez, Taylor Huber, Autumn Meyer, Amanda Milbrandt, Ariel Morrow, Sarah Portell, Emily Reese

College of Science, Technology, Engineering, and Mathematics

James Trent Waltz

Graduate Category

Ashton Glascock – College of Education, Health, and Human Studies

Provost Awards for Teaching Excellence

Excellence in Online Teaching & Learning Award

Dr. Sarah Dietrich – College of Humanities and Social Sciences: Department of English

Excellence in Assessment of Student Learning Award

Dr. Suhair Amer – Harrison College of Business and Computing: Department of Computer Science

Excellence in Supporting Undergraduate Research Award

Barbara Glackin – Dean of Kent Library

Excellence in Supporting Graduate Research Award

Dr. Julie Twidwell – College of Education, Health, & Human Studies: Department of Nursing

Excellence in Teaching General Education Award

Dr. Eric Sentell – College of Humanities and Social Sciences: Department of English

Excellence in Promoting Engaged Learning Award

Kitt Lavoie – Holland College of Arts and Media: Jeanine Larson Dobbins Conservatory of Theatre and Dance

Excellence in Supporting Student Success Award

Dr. James Dufek – Holland College of Arts and Media: Department of Mass Media

Excellence in Flexible Teaching and Learning Innovation Award

Dr. Sara Garner – College of Education, Health, & Human Studies: Department of Child and Family Studies

Student Organizations For fiscal year 2021 there were 180 registered student organizations which included 12 brand new organizations.

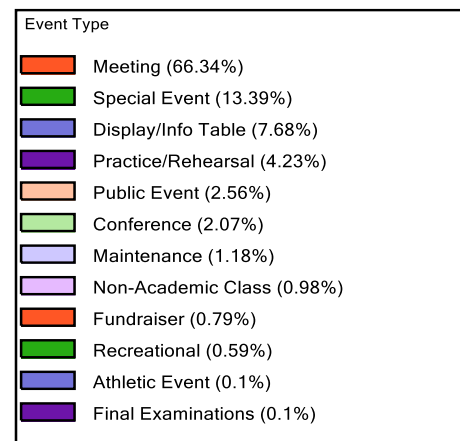
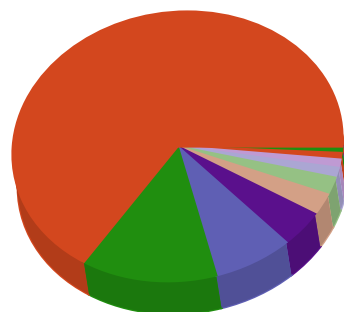
Student Activities Council Student Activities Council (SAC) is the largest, most diverse student programming organization on campus. SAC plans and facilitates a variety of educational, social, cultural, and recreational activities for the campus community. This year they hosted 22 events and 3 of those events were co-sponsorships with other student organizations or departments.



Events Services The Campus Life and Events Service Office coordinates most reservations across the main campus. In FY 2021 we worked to implement a new software, EMS, to be utilized for reservations campus-wide. We continued to use Outlook thru December 2020 and went live with EMS Desktop client and limited web app submission in January 2021. Some of FY 21 statistics were manually calculated from the completed paper reservation forms; the second half of the year will be shared from EMS data tracking/reports. The Assistant Director did not complete paper reservation forms. Please note that the manually calculated numbers do not account for all the reservations in Outlook, just the ones that paper forms were completed for by student staff members.

Number Of Reservations

The total reservation forms submitted from July 1 – December 31, 2020 were 397. Of these forms, 303 were for single occurrence events. 94 (%) were for events that occurred 2 or



more times (i.e. chapter meetings, First Step). Of the 397 request forms 246 were for spaces outside the University Center and 151 were for UC spaces. Paper forms were not completed for all of the events that were migrated from Outlook into EMS during November and December 2020 and therefore is not an accurate reflection of percentage of work time spent on scheduling.

ID Services Redhawk ID production was an area that continued to experience significant changes during the year as a direct result of Covid-19. While we returned to in person identification card production in July 2020, we also continued to partner with New Student Programs for new and transfer student online card submission and processing to limit numbers of people in the CSI at one time and to decrease wait times at in person First Steps and Transfer Orientations. We also maintained the online request process through the University portal for returning and continuing students.

Online ID Request Summary

NSP online form (Feb. 2021-Aug. 2021) shared as part of virtual or pre-in-person First Step/Transfer Orientation: 822 (644 printed for in-person, 178 virtually/mailed)

ID Online Portal form (Mar. 14-Aug. 10, 2021): 130 (20 available for pick up, 110 mailed)

Fiscal Summary

	FY21	FY 20
Revenue		
ID Cards		
507060 Nontaxable Sales	\$13,394	\$14,935
507900 Intra Campus Charges	\$500	\$972
Total ID Cards	\$13,894	\$15,907
University Transfers		
831000 GA waiver	\$116,148	\$8,686
Total University Transfers	\$116,148	\$8,686
Univ Ctr Info Desk Revolving		
507060 Nontaxable Sales	\$72	\$33
831000 Nonmandatory Transfers In	\$60,752	\$60,752
Total Univ Ctr Info Desk	\$60,824	\$60,785
University Center		
506000 Coin Op Sales Taxable	\$66	\$77
507020 Fees (Bond Fee Income)	\$245,001	\$257,537
507080 Other Rentals (Bank)	\$23,500	\$22,500
507090 Taxable Rental Income (Room rental)	(\$403)	\$1,833
507110 Food Service (Chartwells Commission)	\$211,289	\$64,138
507180 Nontaxable Service Nonacademic	\$0	\$348
507220 Interest Income	\$167	\$3,107
507900 Int Campus Charges	\$60,000	\$60,189
831000 Nonmandatory Transfers		\$285,752

Rent - University	\$220,600	\$225,000
Rent - Bookstore		\$60,752
Campus Life Support-ResLife/RecSports		
Total Univ Ctr Campus Activities	\$760,219	\$634,729
Total Revenue	\$951,085	\$720,107
Expenses		
Univ Ctr Support Services		
620000 Faculty Staff Labor	\$50,362	\$47,472
701000 Operating Expenditures		
Total Univ Ctr Support Services	\$50,362	\$47,472
ID Cards		
701000 Operating Expenditures	\$3,310	\$3,845
719060 Bad Debts Expense	\$487	\$320
Total ID Cards	\$3,797	\$4,165
University Transfers		
Total University Transfers	\$13,129	\$148,790
Univ Ctr General Maintenance		
701000 Operating Expenditures	\$35,813	\$35,137
790000 Capital Expenditures		
Total Univ Ctr General	\$35,813	\$35,137
Univ Ctr Custodial Services		
620000 Faculty Staff Labor	\$79,924	\$83,232
701000 Operating Expenditures	\$18,878	\$15,883
701400 Staff/Dependent Fee Waiver		
Total Univ Ctr Custodial Services	\$98,711	\$99,115
Univ Ctr Kitchen Maintenance		
701000 Operating Expenditures	\$78,483	\$76,083
780000 Equipment	\$9,850	\$28,681
Total Univ Ctr Kitchen	\$88,333	\$104,408
Univ Ctr Furniture Equip		
701000 Operating Expenditures	\$120,896	\$109,109
780000 Equipment		\$0
Total Univ Ctr Furniture Equip	\$120,896	\$109,109
Univ Ctr Information Desk		
610000 Student Labor		
701000 Operating Expenditures	\$0	\$33
Total Univ Ctr Information Desk	\$0	\$33
University Center		
610000 Student Labor	\$71,511	\$72,235
620000 Faculty Staff Labor	\$224,781	\$258,949

701000	Operating Expenditures	\$11,295	\$12,471
	Staff/Dependent Fee Waiver	\$3,222	\$2,900
850000	Mand Transf (bond util conversion)	\$25,000	\$25,000
870000	Transfer Expense-VP for Aux Support	\$9,341	\$8,160
Total Univ Ctr Campus Activities		\$345,152	\$380,240
Campus Life			
610000	Student Labor		
620000	Faculty Staff Labor	\$46,871	\$26,602
701000	Operating Expenditures	\$278	\$941
Total Campus Life		\$47,149	\$27,543
Non Budgeted Entries			
620000	Faculty Staff Labor	(899)	\$1,886
Total Expenditures		\$802,443	\$958,252
Net Revenue/Expense		\$148,642	-\$238,145

Fund Balance

	<i>Revenue</i>	<i>Expenses</i>	<i>Net</i>	<i>Fund Balance</i>
FY21	\$951,085	\$802,443	\$148,642	\$201,064
FY20	\$720,107	\$958,252	(\$238,145)	\$52,422
FY19	\$882,943	\$793,283	\$89,660	\$287,458
FY18	\$1,046,860	\$1,054,234	(\$7,374)	\$197,798

Chartwells Educational Dining Services

Chartwells is re-inventing the on-campus dining experience.

We challenge the norm and set new standards by investing in high-tech, food-infused social spaces that bring people together to promote meaningful relationships and interactions. We are food-forward difference makers, bound together by a desire to feed hungry minds and prepare students for success.

For over 20 years, Chartwells Higher Education Dining Services has been the on-campus dining partner for Southeast Missouri State University. In FY2021, the partnership was extended through 2031. Chartwells is proud to contribute over 170 jobs for the local community.



Mission Statement:

As a division of Compass Group, we are committed to consistently delivering superior service in the most efficient way, for the shared benefit of our customers, shareholders and associates.

Our Vision:

To be a world-class provider of contract foodservice and support services, renowned for our great people, our great service and our great results.

Southeast Students and Alumni Building Their Future with Chartwells

Chartwells is proud to employ over 80 active Southeast students within our operations, as well as host several Southeast student interns. Included in Southeast Missouri State University's post-graduate dietetic internship program, Chartwells hosts several dietetic interns a year as part of their outreach rotation. In addition, Chartwells hosts a paid marketing intern every semester. While learning their specific daily duties of their roles, our interns are connected with other Chartwells interns and mentors throughout the country as they participate in weekly webinars with a dedicated student success director. Furthermore, we continue to give our team the tools they need to succeed. Compass includes a digital database with trainings for associates to thoroughly learn all aspects of business, including soft skills such as managing people, presentation training and more.

Joining our team this year is Shu Joshgani, Director of Residential Dining at Towers Café. A graduate of Southeast, Shu has multiple years of experience in food service and retail dining. In addition, Kierstin Brown has expanded her career with Chartwells at Southeast as the Nutrition Specialist and Assistant Director of Towers Café. Kierstin also supports other Chartwells accounts in our region regarding nutrition and wellness.

Every day, alumni of Southeast prove their Will To Do within multiple divisions of the Chartwells business. On the Southeast campus, several key roles are led by Southeast graduates. Specifically, Divisional President, Nadeem Zafar, Resident District Manager, Matthew Ludwig, Director of Marketing and Student Engagement, Alicia Ticer, Senior Director of Retail, Rukhsar Arzoo and Nutrition Specialist, Kierstin Brown.

Customized Approach

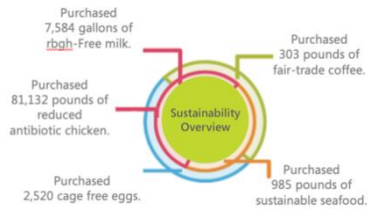
We customize every element of the dining experience to be unique for our Southeast community. Utilizing multiple platforms, such as the Happy or Not devices at Towers Café and St. Vincent's Commons, Chattback, Facebook Messenger or Focus Groups, we help to navigate and create an extraordinary dining experience within our dining halls. We take the feedback from our guests very seriously and in turn, develop an action plan to meet our needs. For example, following our students' vocal endorsement, Towers Café reinstated Wing Wednesdays in the Fall of 2021.

As a premier full-service caterer within the Cape Girardeau and surrounding community, Carved+Crafted Catering focuses on building menus with locally sourced ingredients and seasonal trends. This year we tapped more into the wedding market; participating in Bridal Expos and creating advertising for The Knott. Continuing to expand our position in this market, Carved+Crafted Catering has booked numerous catering events for the upcoming wedding season. Additionally, as concerns for COVID-19 continues, our catering team has worked diligently with clients to cater meals to our customers comfort level; whether that be serving a buffet or individual meal packaging for an event.

Cutting Edge Culinary

Campus Senior Executive Chef Kevin Yarbrough leads the culinary team for Chartwells at Southeast Missouri State University. Trained by French Master Chef Patrice Boely at the prestigious Chickasaw Country Club in Memphis, Tn., Kevin has a talent for southern flare with a modern twist. Yarbrough leads the team in finding seasonal trends, locally sourced ingredients and new innovative recipes to the Southeast campus. Most recently, Kevin has worked with the team to explore and develop greater options and variety for vegetarian and vegan students on campus. In the Fall of 2021, Towers Café introduced a vegan and vegetarian station serving high-protein entrees daily.

Sustaining our Future



Our sustainability philosophy aligns with the goals of Generation Z. We continue to provide compostable to-go boxes and paper straws available upon request within our dining locations. Weekly, Towers Café gives vegetable and fruit trimmings to the University Greenhouse for composting.

Building Our Community

Chartwells recognizes the integral role we play with Southeast Missouri State University and the Cape Girardeau community. Once a year Chartwells provides \$500 to the hospitality management department as an investment in the betterment of the program. Chartwells continues to partner with Quantella Noto and the hospitality management program to facilitate creations, such as Southeast’s famous Hawk Sauce. In the Fall of 2020, with the large Carpe Diem event postponed, Chartwells partnered with the Department of International Education and Services to provide “Chartwells Cultural Food Days” twice a week during the month of November. These cultural food days allowed students to try a taste of different cultures.

Educating Outside the Classroom

In addition to being committed to providing students exceptional meals and service, Chartwells has created a program unique to developing kitchen literacy on campus. Teaching Kitchens have been established as a way to promote confidence in the kitchen, answer common questions and give guests a new recipe in their repertoire. Additionally, we provide DIY events once a month which allow students to explore and create culinary specials at their own leisure.

Earning Recognition

In Oct. of 2020, Divisional President Nadeem Zafar was recognized as a Southeast Alumni Merit Award Recipient. Zafar graduated Southeast with a Bachelor of Science in chemistry and a Bachelor of Science in hospitality.

In February of 2021, Chef Kevin Yarbrough was recognized as a featured chef during Black History Month. From the nomination, Chef Kevin was featured on the Compass National Website, the student run newspaper, the Arrow, and the local newspaper, the Southeast Missourian.



Usage Summary

- FY21 board total meals served on campus was 678,169. Total meals, including catering, guest, cash, Redbucks, and flex was 912,837.

- FY20 board total meals served on campus 677,861. Total meals, including catering, guest, flex, cash, Redbucks, and Flex was 969,531.
- FY19 board total meals served on campus 923,672, Total meals, including catering, guest, flex, cash, Redbucks, and flex was 1,380,793.

Contract Details

	FY19	FY20	FY21
Meal Plan Guarantee	2,900	2,900	2,900
Meal Days	226	226	226
Commission Guarantee	\$234,000	\$234,000	\$234,000
Actual Meal Plan Average	2900	2610	2730
Value Exchange	Breakfast \$4.87 Lunch \$7.44 Dinner/Brunch \$7.44	Breakfast \$4.98 Lunch \$7.60 Dinner/Brunch \$7.60	Breakfast \$5.13 Lunch \$7.83 Dinner/Brunch \$7.83
Catering Allowance	\$35,000 per year	\$35,000	\$35,000
Rate increase	2%	2.2%	2.93%

Dining Venues

- Towers Café @ Towers Complex, cafeteria style
- Rowdy's @ Towers Complex, food court style
- Subway @ Scully, full-service Subway
- St. Vincent's Common @ Dobbins Center, food court style
- Redhawks Market @ University Center, food court style
- Panda Express @ University Center
- Starbucks @ University Center, full-service Starbucks
- Houck's Place @ Merick Hall, food court style

Greek Life

The Greek Life system at Southeast is comprised of many chapters, which are part of one of three governing councils. The membership of these chapters range from 4 members to over 120 members and provide for a Greek community of well over 1,300 members.

Mission

We endeavor to provide an outside the classroom experience that will assist in fostering the growth of student leaders to have a positive impact on the campus, local, and global community.

Vision

The vision of the Greek Life Office at Southeast Missouri State University is to improve the quality of student life by enabling members of the Greek community through advising, educational programs, and collaborating with stakeholders on and off campus. We understand that our Greek organizations serve as diverse communities and that diversity strengthens the overall Greek community.



Student Participation in Greek Life

As an overall percentage of students, Southeast fraternities and sororities made up approximately 18% of the student body for fiscal year 2020.

From fall 2010 through fall 2020 the Greek system grew by 28%

Fall 2020 membership, 1,394
Fall 2019 membership, 1,525
Fall 2018 membership, 1,637
Fall 2017 membership, 1,529
Fall 2016 membership, 1,336
Fall 2015 membership, 1,299
Fall 2014 membership, 1,312
Fall 2013 membership, 1,072
Fall 2012 membership, 1,095
Fall 2011 membership, 1,056
Fall 2010 membership, 1,005



Fall and Spring Chapter Numbers

Chapter numbers are based on the University fourth week census. The numbers reported below reflect the chapter's end of the semester roster, as reported to the University by the chapter.

<i>Chapter</i>	<i>Fall 2020</i>	<i>Spring 2021</i>
Alpha Chi Omega	108	106
Alpha Delta Pi	120	114
Alpha Phi	109	104
Alpha Phi Alpha	4	1
Alpha Xi Delta	108	104
Delta Chi	49	33
Delta Delta Delta	116	115
Delta Sigma Theta	8	6
Gamma Phi Beta	111	90
Iota Phi Theta	N/A	N/A
Kappa Beta Gamma	21	23
Lambda Chi Alpha	53	51
Omega Psi Phi	4	4
Phi Beta Sigma	3	2
Phi Delta Theta	57	61
Pi Kappa Alpha	84	77
Sigma Chi	75	67
Sigma Gamma Rho	3	5
Sigma Nu	102	100
Sigma Phi Epsilon	78	75
Sigma Sigma Sigma	111	99
Sigma Tau Gamma	9	N/A
Tau Kappa Epsilon	32	34
Theta Xi	25	21
Zeta Phi Beta	4	4
Total	1,394	1,299



Panhellenic Recruitment History

Year (fall)	Total	Quota	All PNMs	PMS receiving bid	% of "All PNMs getting bids"
*2021	104	22	214	161	75%
2020	116	33	282	235	83%
2019	116	30	315	222	70%
2018	134	39	339	284	84%
2017	132	44	497	341	67%
2016	122	47	471	290	62%
2015	119	34	468	245	52%
2014	106	32	472	252	54%
2013	80	35	323	204	63%
2012	80	36	352	213	61%
2011	80	35	377	204	53%
2010	80	34	305	171	56%
2009	80	23	243	129	53%
2008	80	25	251	144	53%

Prior to 2013 total was not reset each semester. In 2013 the National Panhellenic Council adopted the Automatically Adjusting Total Policy that required the evaluation of total each semester.
 * Fall 2021 recruitment information, for FY22, was known at the time of printing and is included in the report.

Greek Chapters and Literary Societies

Before "Greek Life" there were *literary societies*, which provided both social and scholarly opportunities for young college students. By the early 1960s, all six literary societies at Southeast were absorbed into, and known furthermore as, local chapters of fraternal organizations, specifically:

- Benton = Sigma Chi
- Webster = Sigma Phi Epsilon
- Mark Twain = Pi Kappa Alpha
- Clio = Delta Delta Delta
- Sorosis = Alpha Chi Omega
- Hesperian = Alpha Delta Pi

Five Star Program

The Five Star Chapter Program, which includes the past Greek Accreditation program, focuses on the actions chapters take and the structure they have in place to support their organization. The Five Star Chapter Program provides organizations the opportunity to be recognized with "star standing" in five key areas of chapter operations 1) Academic Success, 2) Chapter Management,

3) Membership Development and Education, 4) Civic and Community Engagement, and 5) Harm Reduction/Risk Management.

Evaluation

The submitted materials are reviewed by a panel of faculty and professional staff at Southeast Missouri State University or invited professionals with experience in Greek Life and/or who work with student organizations at a college or university. Each submission is reviewed by three panelists and the average of the three scores will be the score for each item/section. Reviewers are asked to provide written feedback in relation to their score. Any dispute between panelists will be resolved by the Office of Greek Life.

Star standing in each of the areas is based upon a set of pertinent criteria. The star standings will be determined by the following point value:

- Five Star Chapters - Chapters attaining 90% or more of possible points
- Four Star Chapters – Chapters attaining 70% - 89% of possible points
- Three Star Chapters – Chapters attaining 55% - 69% of possible points
- Two Star Chapters – Chapters attaining 41% - 54% of possible points
- One Star Chapters – Chapters attaining 26% – 40% of possible points
- Chapter Non-Conforming - Chapters scoring less than 25% of the eligible points or failing to submit any information for the Five Star Chapter Program

5 Star Award (FY20)

The following 5 Star Award program awards were presented in FY20. Additional detail on each award and star ranking for each chapter can be found on the Greek life website (semo.edu/greeklife)

- University Five Star Sorority of the Year; Delta Delta Delta
- University Five Star Fraternity of the Year; Phi Delta Theta
- Sorority Academic Achievement Award; Delta Delta Delta
 - Honorable Mention: Alpha Chi Omega
- Fraternity Academic Achievement Award; Sigma Nu
 - Honorable Mention: Phi Delta Theta
- Sorority Chapter Management Award; Gamma Phi Beta
 - Honorable Mention: Alpha Chi Omega,
- Fraternity Chapter Management Award; Phi Delta Theta
 - Honorable Mention: Sigma Nu, Theta Xi
- Sorority Membership Development & Education Award; Delta Delta Delta
 - Honorable Mention: Alpha Delta Pi, Sigma Sigma Sigma
- Fraternity Membership Development & Education Award; Sigma Nu
 - Honorable Mention: Phi Delta Theta, Tau Kappa Epsilon
- Sorority Civic and Campus Engagement Award; Alpha Delta Pi
 - Honorable Mention: Alpha Chi Omega, Delta Delta Delta

- Fraternity Civic and Campus Engagement Award; Phi Delta Theta
 - Honorable Mention: Sigma Nu, Sigma Phi Epsilon
- Sorority Harm Reduction Award; Delta Delta Delta
 - Honorable Mention: Alpha Chi Omega, Alpha Xi Delta
- Fraternity Harm Reduction Award; Phi Delta Theta
 - Honorable Mention: Sigma Nu, Sigma Phi Epsilon

A listing of past chapter of the year award winners can be found in *Appendix D*.

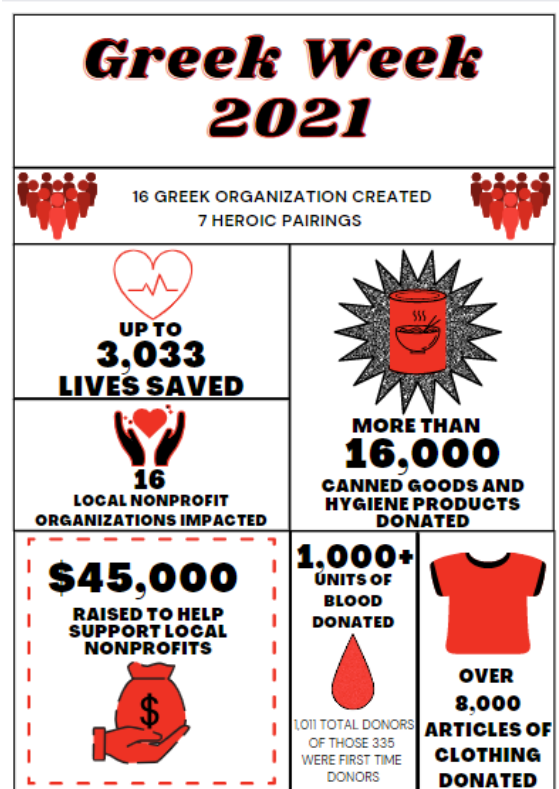
Greek Week

Each spring the Greek community comes together for a mix of competition, celebration, and philanthropy. Greek Week is an opportunity to shed the stereotype that some have of Greek Life and showcase the work they do to impact the community.

Greek Week was to be held on April 11th through April 18th. Due to the COVID-19 pandemic and Greek Week was looking like it was going to be like none other. Social distancing, mask requirements, and room capacities all posed obstacles for a “normal” Greek Week, however the student leaders that composed the Greek Week Executive Board took the challenge head on pushing to do as much as possible to help the community while keeping safe. Many events were moved to be only certain pairings at a time, or virtual streaming options were available for the typical Academic auditorium

packed events like the Lip Sync Battle and Greek Sing. The group also change the name of the traditional “Walk a Mile in Her Shoes” to “Walk a Mile in Their Shoes” to help promote sexual assault awareness and support both male and female victims. A big hit for Greek Week was the modification of the classic “Penny Wars” to be moved virtual due to the coin shortage and to help ensure safety of the community from COVID. The student leaders kept the same concept, renaming it “Money Maddness” utilizing both Venmo and GoFundMe where over \$14,000 dollars was raised in a little over an hour for the local United Way. The theme for Greek Week was “Heroes on the Hill”, aka superheroes.

Pairings, Themes, and Nonprofit Partners can be found in Appendix F.



Greek Week & Greek Awards

Overall Greek Week Spring 2021

<i>1st Place</i>	Alpha Delta Pi and Phi Delta Theta
<i>2nd Place</i>	Alpha Chi Omega and Pi Kappa Alpha
<i>3rd Place</i>	Alpha Xi Delta and Sigma Nu

Greek Sing Spring 2021

<i>1st Place</i>	Alpha Xi Delta and Sigma Nu
<i>2nd Place</i>	Alpha Delta Pi and Phi Delta Theta
<i>3rd Place</i>	Gamma Phi Beta, Delta Chi, and Theta Xi
<i>Greek Week Director</i>	Joey Kedl, Phi Delta Theta

Greek Awards (chosen by Order of Omega)

<i>President of the Year:</i>	Allie Hammack, Delta Delta Delta
<i>President of the Year:</i>	Zach Tate, Theta Xi
<i>Professor of the Year:</i>	Dr. Slavica Kodish and Dr. Larry Bohannon
<i>Man of the Year:</i>	Xander Goffinet, Phi Delta Theta
<i>Woman of the Year:</i>	Aly Moore, Sigma Sigma Sigma
<i>New Member of the Year</i>	Grace Barlage, Delta Delta Delta
<i>New Member of the Year</i>	Jace Lowe, Sigma Nu
<i>Sophomore of the Year:</i>	Heather Hoffman, Sigma Sigma Sigma
<i>Sophomore of the Year:</i>	Joel Philpott, Sigma Nu
<i>Junior of the Year:</i>	Kayla Stauder, Alpha Delta Pi
<i>Junior of the Year:</i>	Logan Phillips, Sigma Nu
<i>Community Service Award:</i>	<i>Megan Walker, Alpha Xi Delta</i>
<i>Community Service Award:</i>	Aaron Crowell, Sigma Nu
<i>Unsung Heroine:</i>	Tanner Moody, Alpha Chi Omega
<i>Unsung Hero:</i>	Ryan Bieri, Sigma Nu
<i>Sorority Advisor of the Year:</i>	Alarie Ornburn, Alpha Chi Omega
<i>Fraternity Advisor of the Year:</i>	Zach Bucheit, Tau Kappa Epsilon
<i>Sorority Greek Heart</i>	Morgan Foulks, Alpha Chi Omega
<i>Fraternity Greek Heart</i>	Daniel Frew, Sigma Nu

Fiscal Summary

Expenses		FY21	FY 20
610000	Student Labor	\$5,154	\$3,768
620000	Faculty Staff Labor	\$17,414	\$17,372
701000	Operating Expenditures	\$6,397	\$15,082
	Graduate Asst Fees Fee Waiver		
	Ground Transportation		\$437
	Lodging		\$861
	Travel Per Diem Meals		\$488
	Business Meals		\$107

Facilities Mgmt Services		\$200
Other Professional Services		\$1,587
Postage and Related Expenses		\$3
Printing and Binding	\$534	\$260
Telephone and Line Charges		\$257
Computer Hardware Software Op Exp		\$1,808
Software Subscriptions		\$18
Office Supplies	\$756	\$50
Custodial Supplies	\$192	
Educational Supplies		\$55
Banquets Catering		\$1,171
Technical and Specialized Suppl		\$384
Prizes and Awards	\$3,161	\$2,135
Dues and Memberships	\$1,498	\$740
Household Equip Under 1000		\$293
Institutional Clothing		\$193
Conferences Meetings Registration	\$258	\$1,719
Vehicle Rentals		\$1,316
Specialized Equipment Rentals		\$1,000
Other Rentals		

Total **\$28,965** **\$36,223**

Housing

Greek organizations currently have three organized housing options:

1. Greek Area: Built in the mid-1960's, there are five traditional dormitory buildings that are home to six sororities and five fraternities. Some chapters have been in the same building since the area opened in the 1960's. Others have moved in and out of the area over the past decades.

F-building

- East: Delta Delta Delta, 37 beds capacity (with RA: 38)
- West: Alpha Chi Omega, 41 beds capacity (with RA: 42)

G-building

- East: Alpha Delta Pi, 37 beds capacity (with RA: 38)
- West: Sigma Sigma Sigma, 38 beds capacity (with RA 39)

H-Building

- East: Lambda Chi Alpha, 33 beds capacity (with RA: 34)
- West: STEM, 35 beds capacity (with RA: 36)

J Building

- East: Gamma Phi Beta, 41 beds capacity (with RA: 42)
- West: Alpha Xi Delta, 37 beds capacity (with RA: 38)

K Building

- East: Alpha Phi, 35 beds capacity (with RA: 36)

- 1st Floor West: Delta Chi, 11 beds capacity
 - 2nd Floor West: Tau Kappa Epsilon, 8 beds capacity (with RA: 9)
 - 3rd Floor West: Phi Delta Theta, 14 beds capacity
2. Off Campus Houses: There are an unknown number of houses that are occupied by members of Greek chapters. Off campus houses are privately owned rental houses which rent to members of the same chapter.
 3. Greek Village/Court: Opening in fall 2016 provides four new houses for approximately 110 Greek students. These houses are limited to sophomore and above students. These houses will be managed via a lease agreement between the housing corporation and the University.

Chapter Grades (all chapter term gpa)

Chapter	Fall 2020	Spring 2021
<i>Alpha Chi Omega</i>	3.520	3.504
<i>Alpha Delta Pi</i>	3.480	3.428
<i>Alpha Phi</i>	3.221	3.445
<i>Alpha Phi Alpha</i>	2.813	NA
<i>Alpha Xi Delta</i>	3.457	3.494
<i>Delta Chi</i>	2.874	2.976
<i>Delta Delta Delta</i>	3.476	3.584
<i>Delta Sigma Theta</i>	1.982	2.425
<i>Gamma Phi Beta</i>	3.354	3.417
<i>Kappa Beta Gamma</i>	3.250	3.095
<i>Lambda Chi Alpha</i>	3.031	3.088
<i>Omega Psi Phi</i>	2.517	1.938
<i>Phi Beta Sigma</i>	2.872	2.200
<i>Phi Delta Theta</i>	3.379	3.240
<i>Pi Kappa Alpha</i>	2.979	2.971
<i>Sigma Chi</i>	2.867	2.944
<i>Sigma Gamma Rho</i>	2.676	2.857
<i>Sigma Nu</i>	3.308	3.285
<i>Sigma Phi Epsilon</i>	3.018	3.118
<i>Sigma Sigma Sigma</i>	3.419	3.434
<i>Sigma Tau Gamma</i>	2.809	NA
<i>Tau Kappa Epsilon</i>	2.991	3.129
<i>Zeta Phi Beta</i>	2.449	2.781



Governing Councils

The Greek Life system has three Governing Councils. The Interfraternity Council, National Pan-Hellenic Council, and the Panhellenic Council. A listing of the Presidents of these three Councils can be found in Appendix C.

Office of Military and Veterans Services

Opened in 2012, the Office of Military and Veterans Services (OMVS) provides resources, information, networking opportunities, and support to Veterans, military personnel, and their dependents. The OMVS also assists in recruitment, enrollment, and retention of military-affiliated student population.



Mission

The Office of Military and Veterans Services (OMVS) provides targeted support and services to all military and Veteran students, as well as their dependents, with the goal of having the students attain academic and personal success. The OMVS assists students with access and completion of student processes such as admissions, financial aid, billing, military education benefits, registration, referrals, and networking opportunities. In addition, the OMVS advocates for our military-affiliated population and hosts events, workshops, and training for staff, faculty, and students. This aids in assisting the Southeast community gain a better understanding of, and provide better services to, this unique population.

Services offered by the OMVS:

- Education benefits counseling and processing (specific to military affiliated population)
 - Federal and State Tuition Assistance
 - VA Educational Assistance
 - Scholarships and Free Application for Federal Student Aid (FAFSA)
- Personalized assistance
 - Application processes
 - Military Transcript Evaluations
 - Transition Assistance
 - Housing referrals (on and off campus)
 - Networking with the community and fellow Veterans
 - Counseling, disability services, medical/health, housing, and employment referrals
- Endowed Scholarship Administration (military-affiliated population)
- Support the Student Veterans Organization (SVO)
 - Provide a dedicated space and office for the SVO; sponsors SVO events and professional development



Student Interactions

Fiscal Year	FY21	FY20	FY19
VA educational benefits processed	556	663	723
Tuition Assistance processed	210	185	189

Usage Summary

- Military Student Population
 - Self-Reported Military and Veterans: 344
 - Spouses and Dependents: 684
 - Veterans Degrees Awarded: 55; Spouse/Dependent Degrees Awarded: 152

Programs and Accomplishments (FY21)

- Awarded Military-Friendly Gold Designation, Military Spouse Friendly, and Best for Vets College
- Sponsored five VA Work-Study positions and one Graduate Assistant position
- Assisted with transitioning institution into the Army’s new Federal Tuition Assistance portal, Army IgnitED
- Continued membership and participation in organizations (i.e., Missouri Multi-State Collaborative on Military Credit Steering Committee, MO Dept. of Higher Education, MO Dept. of Mental Health workgroup, Joining Community Forces, NASPA, Veterans Assistance Council, Missouri Council on Military Credit, Military) in order to best serve our student Veteran population
- Participated in Department of Veterans Affairs School Certifying Official training, Veterans in Higher Education Collaborative, and Eastern Missouri District learning Summit
- Executed training events: Military Benefits & Entitlement Workshop & Military-Affiliated Student Training (MAST).
- Continued to assist students and the Registrar’s Office with in-depth military transcript evaluation and credit articulation
- Served on Prior Learning Assessment Working Committee to advance policy and procedures for experiential and non-traditional credit
- Executed engagement activities, to include brunches, Patriot Day Ceremony, Veterans Day lunch, Veterans Memorial Plaza dedication, and support the Student Veterans Organization
- Assisted local agencies to provide shelter and resources for homeless Veterans
- Assisted student Veterans and their families with referrals and obtaining gainful employment through external agencies (Social Security Administration, MO Career Center, Snap-On



Fiscal Summary

	FY21	FY20
<i>Student Labor</i>	\$4,898	\$603
<i>Faculty Staff Labor</i>	\$84,417	\$83,064
<i>Total Operating Expenditures</i>	\$1,621	\$3,087
Graduate Asst Fees Fee Waiver		
In State Travel		
Out of State Travel		
Airfare		\$285
Ground Transportation		
Business Meals		\$33
Other Operating Services		\$25
Postage and Related Expenses		\$15
Printing and Binding	\$36	\$355
Telephone and Line Charges	\$72	\$1,094
Advertising		
Promotional Items		
Office Supplies	\$943	\$517
Computer Supplies	\$10	\$59
Custodial Supplies		
Food Service Supplies	\$96	\$30
Banquets Catering	\$264	\$404
Institutional Clothing		
Dues and Memberships		\$100
Furniture Purch Under 5000		\$170
Conferences Meetings Registration		
Specialized Equipment Rentals		
Total Expenses	\$87,126	\$86,754

Total Expenses



Recreation Services

Recreation Services provides a variety of services and programs for students and recreation services members. Programs include organized fitness and wellness classes, personal training, intramural programs, club sports, and community events.



Mission

Recreation Services at Southeast Missouri State University is dedicated to providing quality facilities, innovative programs and services that meet the diverse recreational needs of the University community. We strive to enhance the quality of life, increase socialization, and encourage lifelong wellness.



Facilities

- Student Recreation Center - Multiple basketball/volleyball courts, cardio equipment, weights, racquetball courts, indoor track, climbing wall, fitness/dance studios and administrative offices
- Student Aquatic Center; lap pool, leisure pool, hot tub, zip line, and aquatic climbing wall
- Intramural Fields; 2 multipurpose artificial turf softball/soccer fields, 2 sand volleyball courts, 1 large multipurpose natural grass field (large enough for 2 flag football fields, or one large soccer pitch); 2 tennis courts
- Challenge Course; low and high ropes challenge course
- Parker Hall Dasher board Court; hosts a variety of indoor sports such as soccer, hockey, and intramural contest
- eSports arena – Towers complex; 12 dedicated gaming computers, 2 streaming/casting computers, 5 gaming consoles for open and competitive play



Club Sports & eSports

- The eSports Arena opened in the Fall of 2019 and in FY21 the club grew to over 450 members.
- The competitive eSports teams won two Rocket League Championships, one Valorant undefeated season and league championship, and one Smash Ultimate championship.

For FY21 there were 14 club sports, serving approximately 650 students

Baseball	Basketball (women)	Bass Anglers	Disc Golf
eSports	Riding Club	Rock Climbing	Roundnet
Running	Scuba	Strength Club	Swimming
Tennis	Ultimate Frisbee		

The pandemic impacted several of our club sports, as many of the leagues took a hiatus on competing in FY21, but with plans to return to regular competition in FY22.



Greek Men’s Intramural Champions
 Fall 2019 – Spring 2020
 (New Champion for Pi Kappa Alpha)



Outgoing Greek Women’s Intramural Champions
 Fall 2019 – Spring 2020
 (New Champion Delta Delta Delta)

Intramural Participation Fall 2020 – Spring 2021

	Participants	%	Unique Participants	%	Participations	%
Southeast Missouri	3575	100	1072	100	6828	100
Man	2212	61.9	650	60.6	4701	68.85
Woman	1363	38.1	422	39.4	2127	31.15
Freshman	1032	28.9	283	26.4	1957	28.66
Man	631	61.1	167	59	1331	68.01
Woman	401	38.9	116	41	626	31.99
Sophomore	880	24.6	276	25.8	1715	25.12
Man	553	62.8	170	61.6	1175	68.51
Woman	327	37.2	106	38.4	540	31.49
Junior	761	21.3	223	20.8	1399	20.49
Man	416	54.7	122	54.7	858	61.33
Woman	345	45.3	101	45.3	541	38.67
Senior	627	17.5	218	20.3	1354	19.83
Man	469	74.8	148	67.9	1101	81.31
Woman	158	25.2	70	32.1	253	18.69
Grad Student	6	0.17	4	0.37	17	0.25
Man	5	83.3	3	75	15	88.24
Woman	1	16.7	1	25	2	11.76
Faculty/Staff	3	0.08	3	0.28	6	0.09
Man	3	100	3	100	6	100
Woman	0	0	0	0	0	0
Spouse	0	0	0	0	0	0
Man	0	0	0	0	0	0
Woman	0	0	0	0	0	0
Other	266	7.44	135	12.6	380	5.57
Man	135	50.8	76	56.3	215	56.58
Woman	131	49.3	59	43.7	165	43.42
#	Teams	%	Games	%	Forfeits	Defaults
Southeast Missouri State University	360	100	790	100	157	38

Throughout FY21 we were able to offer a full schedule of intramural sports. Students wore face coverings while competing throughout the year.

Fitness and Wellness Programs for FY21

- Group fitness class offerings including Barre, Yoga, Aerial Yoga, RedhawkPUMP, RedhawkSHRED, and Soulful Cycling;
- Peloton bikes were added in FY21.
- Personal training.

- Employee wellness screening was postponed for FY21 due to the pandemic.

Fitness/Wellness Participation Fall 2020 – Spring 2021

	Participants	%	Unique Participants	%	Participations	%
Southeast Missouri	748	100	177	100	277	100
Man	15	2.01	11	6.21	7	2.53
Woman	733	98	166	93.8	270	97.5
Freshman	163	21.8	47	26.6	39	14.1
Man	8	4.91	4	8.51	1	2.56
Woman	155	95.1	43	91.5	38	97.4
Sophomore	157	21	38	21.5	69	24.9
Man	2	1.27	2	5.26	2	2.9
Woman	155	98.7	36	94.7	67	97.1
Junior	164	21.9	43	24.3	52	18.8
Man	2	1.22	2	4.65	1	1.92
Woman	162	98.8	41	95.4	51	98.1
Senior	128	17.1	32	18.1	43	15.5
Man	2	1.56	2	6.25	2	4.65
Woman	126	98.4	30	93.8	41	95.4
Grad Student	10	1.34	5	2.82	2	0.72
Man	0	0	0	0	0	0
Woman	10	100	5	100	2	100
Faculty/Staff	85	11.4	5	2.82	69	24.9
Man	0	0	0	0	0	0
Woman	85	100	5	100	69	100
Spouse	0	0	0	0	0	0
Man	0	0	0	0	0	0
Woman	0	0	0	0	0	0
Other	41	5.48	9	5.08	3	1.08
Man	1	2.44	1	11.1	1	33.3
Woman	40	97.6	8	88.9	2	66.7
#	Classes	%	Sessions	%	Participants	
Southeast Missouri State University	10	100	296	100	748	
	Unique Participants			Participations		
	177			277		

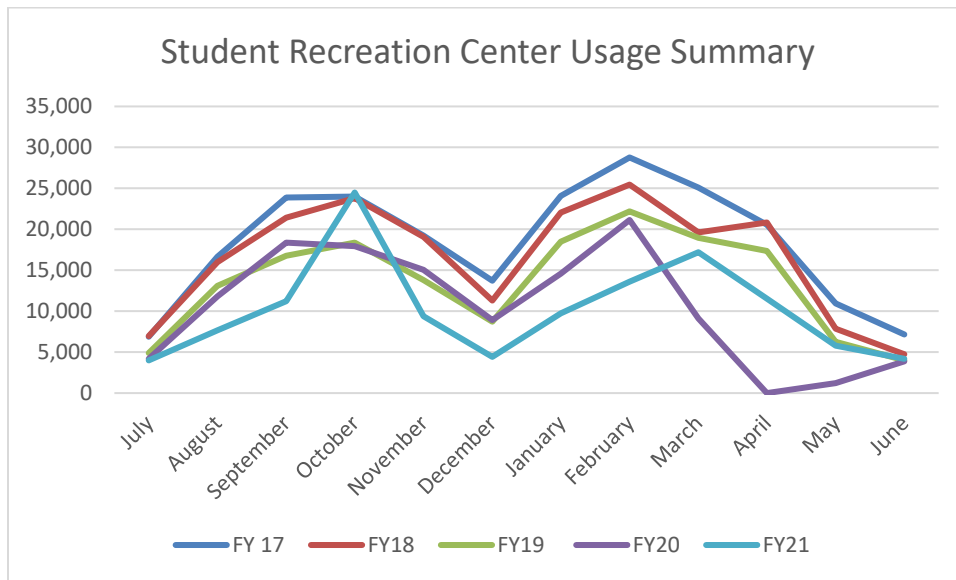
In person classes utilized face coverings to help slow the spread of Covid-19



Student Recreation Center Usage Summary

Total students/members usage of the SRC, not including visitors for campus events such as commencement or move in day.

	<u>FY 17</u>	<u>FY 18</u>	<u>FY 19</u>	<u>FY 20</u>	<u>FY 21</u>
July	6,879	6,944	4,883	4,191	3,991
August	16,652	15,982	13,100	11,816	7,677
September	23,896	21,410	16,772	18,357	11,236
October	23,996	23,798	18,369	17,937	24,491
November	19,239	19,079	13,780	15,046	9,374
December	13,705	11,312	8,724	8,910	4,408
January	24,083	22,042	18,494	14,563	9,733
February	28,769	25,453	22,186	21,134	13,607
March	25,096	19,605	18,965	9,121	17,183
April	20,561	20,845	17,338	0	11,550
May	10,943	7,845	6,261	1,230	5,800
June	7,163	4,739	4,002	3,866	4,205
Totals	220,982	199,054	162,874	126,171	123,255



Southeast Missouri State University
Student Recreation Center
All Facility Entrance Scans
July 1, 2020 - June 30, 2021

Month	Alumni	Community	Employee	Student	University Affiliate	Totals
Jul-2020	306	187	527	2,661	310	3,991
Aug-2020	198	81	353	6,836	209	7,677
Sep-2020	185	140	415	10,219	277	11,236
Oct-2020	695	538	1,182	20,955	1,121	24,491
Nov-2020	204	170	392	8,230	378	9,374
Dec-2020	237	177	409	3,174	411	4,408
Jan-2021	307	209	579	8,076	562	9,733
Feb-2021	231	223	447	12,259	447	13,607
Mar-2021	290	260	622	15,571	440	17,183
Apr-2021	299	254	502	10,105	390	11,550
May-2021	308	241	480	4,411	360	5,800
Jun-2021	306	345	562	2,531	461	4,205
Totals	3,566	2,825	6,470	105,028	5,366	123,255

Southeast Missouri State University
Student Recreation Center
Unique Facility Entrance Scans
July 1, 2020 - June 30, 2021

Month	Alumni	Community	Employee	Student	University Affiliate	Totals
Jul-2020	29	20	65	554	50	718
Aug-2020	28	14	59	1,878	35	2,014
Sep-2020	23	15	61	1,949	44	2,092
Oct-2020	38	27	93	2,481	77	2,716
Nov-2020	30	17	61	1,847	54	2,009
Dec-2020	29	20	69	740	58	916
Jan-2021	42	29	94	2,020	83	4,747
Feb-2021	35	31	82	2,256	75	2,479
Mar-2021	35	23	99	2,328	64	2,549
Apr-2021	34	25	82	1,886	62	2,089
May-2021	33	37	91	1,268	62	1,491
Jun-2021	46	43	98	453	60	700
Totals	402	301	954	19,660	724	24,520

Membership Summary

FY 2021 - 7/1/2020 - 06/30/2021

	Early Month	Early Year	SRC Month	SRC Year	Totals
UA	6	7	111	41	165
Alumni	5	8	34	6	53
Community	9	1	57	7	74
Summer Student	0	0	364	0	364
Totals	20	16	566	54	656

Membership Summary

FY 2020

	All				Monthly		Early Month	Early Year	SRC Month	SRC Year	Totals
	Full	Inclusive	SAQ	Limited	Full	Inclusive					
UA	4	14	2	3	0	0	7	16	290	85	421
Alumni	0	1	2	2	0	0	6	12	41	17	81
Community	1	3	1	0	0	1	5	4	35	15	65
Totals	5	18	5	5	0	1	18	32	366	117	567

Student Aquatic Center Usage Summary

	<u>FY 17</u>	<u>FY 18</u>	<u>FY 19</u>	<u>FY 20</u>	<u>FY 21</u>
Daily Usage:	34,468	31,793	34,815	15,313	17,924
Jackson H.S.	2,207	2,214	2,379	1,447	1,062
Athletics	313	285	385	315	673
Totals	36,988	34,292	37,579	17,075	19,659

Fiscal Summary

	<u>FY21</u>	<u>FY20</u>
University Transfers		
831000 Non-mandatory transfers In	\$281,617	\$21,160
831000		
Total University Transfers	\$281,617	\$21,160
Student Recreation Center		
501200 General Student Fee	\$2,157,041	\$2,259,531
507010 Camps Revenue	\$31,930	\$8,425
507020 Fees (Member, Intramural, sales)	\$81,564	\$74,001
507060 Nontaxable Sales (Fitness, Instruction)	\$26,490	\$30,159
507090 Taxable Rental Income	\$5,514	\$38,701
507900 Intra Campus Charges Camps & Conferences		\$23,198

507100	Nontaxable Facilities	0	-\$4,110
507220	Interest Income	\$8,882	\$33,665
507900	Intra Campus Charges	\$22,371	\$2,395
507900	Intra Campus Charges SRC Employee Benefit		\$21,282
521100	Foundation Support	0	\$698
831000	Nonmandatory Transfers-University Support	(\$6,305)	(\$15,000)
Total Revenue		\$2,327,488	\$2,481,395
University Transfers			
Total University Transfers		\$48,165	\$233,305
SRC Custodial Services			
620000	Faculty Staff Labor	\$83,482	\$81,785
701000	Operating Expenditures	\$6255	\$6,780
Total SRC Custodial Services		\$89,565	\$88,565
Student Recreation Center			
610000	Student Labor	\$244,516	\$213,580
620000	Faculty Staff Labor	\$448,041	\$459,059
701000	Operating Expenditures	\$138,463	\$145,705
	Staff Fee Waiver	\$6,549	\$2,730
703200	Utilities (North)	\$260,000	\$260,000
711400	Bond Administrative Cost	\$57	\$90
719060	Bad Debts Expense	\$0	\$40
780000	Equipment	\$0	\$17,825
850000	Transfer Expense-Debt Retirement	\$354,340	\$925,290
870000	SRC N Roof Replacement Loan payment	\$10,000	\$10,000
Total Student Recreation		\$1,461,966	\$2,034,319
Recreational Services - Club Sports			
871000	Transfer Expense-VP for Aux Support	\$17,514	\$11,657
701000	Operating Expenditures	\$26,896	\$14,418
Total Recreational Services - Club Sports		\$44,410	\$26,075
Non Budgeted Entries			
620000	Faculty Staff Labor	(\$6,951)	(\$5,645)
Total Expenditures		\$1,637,384	\$2,376,710
Net Revenue/Expense		\$690,104	\$104,685

Office of Residence Life

The University provides a variety of on-campus living options. These options include traditional dormitories, the oldest Cheney Hall dating back to the late 1930s to the suite-style Dobbins Center which opened in 2014 and the Greek Village leased properties that opened in 2016 and 2017.



Mission

We endeavor to provide a residential experience which supports student success.

Vision

We recognize the unique role of college students as future leaders in our society and community. In support of this role, our residential programs and services enhance the development of college students through the integration of the classroom and co-curricular educational experiences.

We recognize students as members of diverse communities who each possess individual needs and goals.

To support student's needs and goals, we foster opportunities for personal development through individualized interactions between students, staff, and family members.

FY21 Recap

Dearmont Hall, closed in fall 2019 due to declining housing contracts, was reopened in fall 2020 to serve as isolation/quarantine housing for students who tested positive or had been in close contact with someone who tested positive for COVID. With its four separate wings and single-room setup, the building was a perfect choice to house residential students who decided to isolate/quarantine on-campus instead of returning home.



Beds used: Fall 2020 = 181 Spring 2021 = 12

Additional AC units, MicroFridges, mini-refrigerators, microwaves, and linens were purchased to ensure students transitioned into the space successfully. Facilities Management contracted with Service Master to provide cleaning services in common areas and University custodial staff cleaned student rooms after they had been vacated. A Hall Director was hired using University COVID funding to manage every aspect of the facility including working with students as they moved into and out of the building.

University COVID funding was made available to complete flooring projects in all five Group Housing buildings and Vandiver Hall during summer 2021. Carpet and tile, which had been in place for nearly 20+ years in some locations, was removed and vinyl plank flooring was installed in the hallways and vinyl tile was installed in student rooms. This new flooring would be easier for students and custodial staff to keep clean and would address concerns about allergens.

Funding was also identified to replace all the bin-style ice machines in the residence halls with hotel-style ice/water machines. New machines were installed in each Group Housing building, Merick, and Vandiver Halls. The new machines would address concerns about cross-contamination and would be safer for students and staff to use during the pandemic.

An upgrade to the elevators in both Towers North and Towers West, which began in April 2020, was completed in December 2020. Each pair of elevators took between 16-18 weeks to upgrade. The contractor took one elevator out of service in each building from mid-April August. All four elevators were brought back into service for hall opening. The contractor then repeated the process with the second set of elevators taking them out of service in late August until the work was completed in December 2020.



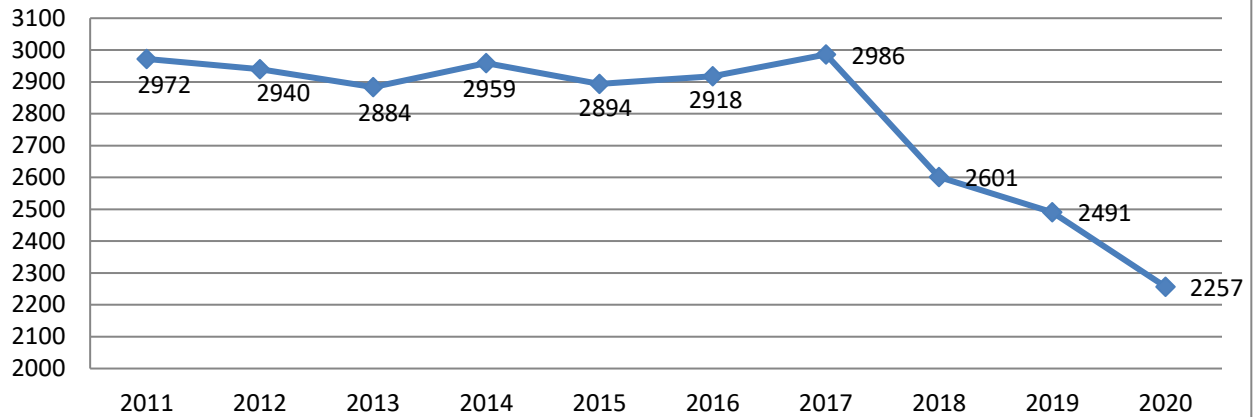
to

Student interest in single rooms continued to be high across the housing system. To provide more consistent levels of staffing, half of Towers East was converted to single-occupancy rooms for fall 2020. Half of Towers South, which had been fully converted to single-occupancy rooms in fall 2019, was returned to double-occupancy rooms. Single-occupancy rooms were located on the odd-numbered floors and double-occupancy rooms were located on even-numbered floors where the RA for the two floors lived. This move kept the same number of single-occupancy rooms available for residents on the north side of campus within the Towers residence halls.

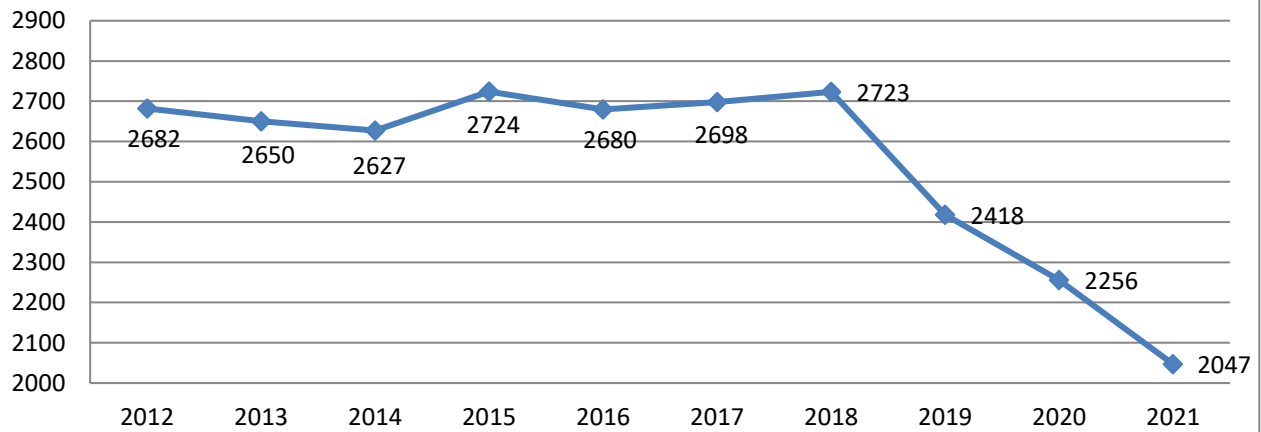
Occupancy Summary

The Residence Halls opened in fall 2020 with 2,311 students calling the residence halls their home. For the spring 2021 semester, they opened with 2,107 students.

Fall 4th Week Census



Spring 4th Week Census



Average Annual Occupancy and Board (Actual)

	FY21	FY20	FY19	FY18	FY17	FY16	FY15	FY14	FY13
Board Plans	2302	2,564	2,773	3,017	2,936	2,896	3,048	3,028	2,876
Shared Rooms	2137	2,369	2,509	2,850	2,803	2,785	2,839	2,753	2,797
Private Rooms	89	46	80	47	57	72	73	106	20
Opening Day Occupancy	2,311	2,522	2,698	3,067	2,946	2,940	3,040	2,939	3,006

Fiscal Summary

	Revenue	Expenses	Net	Fund Balance
FY21	\$22,298,507	\$21,683,552	\$614,955	\$1,161,978
FY20	\$23,609,028	\$24,945,322	(\$1,336,294)	\$547,023

FY19	\$24,718,453	\$25,576,583	(\$862,476)	\$1,883,317
FY18	\$26,872,094	\$26,124,909	\$747,185	\$2,745,793
FY17	\$25,313,053	\$25,997,056	(\$678,003)	\$1,998,608
FY16	\$24,186,615	\$25,016,266	(\$829,651)	\$2,676,611
FY15	\$24,749,094	\$24,325,823	\$423,271	\$3,506,262
FY14	\$23,402,385	\$25,141,736	(\$1,739,351)	\$3,082,991
FY13	\$22,206,180	\$20,647,081	\$1,559,099	\$4,822,342
FY12	\$21,728,718	\$23,728,718	(\$1,946,308)	\$3,263,243
FY11	\$20,842,597	\$18,818,821	\$2,023,776	\$5,209,551

Fiscal Summary

Revenue		FY21	FY20
	Room Contracts	\$20,868,548	\$ 11,571,697
	Private Rooms	\$13,432,978	\$ 111,364
	Board Contracts	\$382,818	\$ 5,947,555
	Other Room & Board	\$6,957,121	\$ 3,508
	Summer Room and Board Contracts		\$ 83,853
	Summer Room	\$98,000	\$ 22,911
	Summer Board	\$58,000	\$ 10,674
	Year end accrual	\$40,000	\$ 50,268
101164	Cancellation administrative Fees	\$75,000	
101164	Housing Buyout Fees	\$67,500	\$75,000
	cover COVID lost revenues		\$ 4,327,707
101154	Camps-507900	\$105,000	\$ 80,708
101164	Break & Early Arrival-507250	\$6,534	\$ 128,359
101164	Dearmont rental-831000	\$47,000	\$ 47,000
101164	Bank income-507100	\$1,500	\$ 1,500
101164	Interest Earned-507220	\$24,787	\$ 135,872
101164	Dobbins River Campus Center Suite Rent	\$20,000	\$ 20,000
100999	Vending Non-Soda-506000	\$6,988	\$ 15,235
101000	Vending Soda-506000	\$3,679	\$ 24,207
101003	Small Appliance Rentals	\$18,644	\$ 16,767
101004	Parking Meters-507060	\$14,925	\$ 21,454
101153	Food svc comm-507110	\$49,292	\$ 23,568
101174	Wash St apts-507100	\$-	\$ 40,200
101179	CATV Billing-507020	\$40,200	\$ 112,666
103455	Pi Kappa Alpha House	\$129,226	\$ 141,721
103454	Sigma Chi House	\$-	\$ 155,668
103456	Sigma Nu House	\$123,857	\$ 155,202
103457	Sigma Phi Epsilon House	\$130,443	\$ 162,946
101182	Hall Council Fees-507020	\$130,025	
101164	Technology Fee-507020	\$137,692	\$ 112,666
101183	Damage chgs-505300	\$63,750	\$ 39,499

Total Revenue **\$22,298,507** **\$ 23,609,028**

Expenses

100812	Utilities	\$1,642,031	\$1,642,031
	Personnel	\$219,945	\$ 232,477
	Operations	\$1,422,086	\$ 1,357,383
100803	Custodial	\$1,336,796	\$1,336,796
	Student Labor	\$73,238	\$ 58,599
	Personnel	\$1,172,787	\$ 1,303,398
	Equipment	\$-	
	Operations	\$82,130	\$ 80,870
	Scholarships-701410	\$8,641	\$ 4,731
100792	Maintenance	\$199,885	\$ 196,636
	Student Labor	\$30,551	\$ 19,578
	Personnel	\$-	\$ 20,949
	Equipment	\$-	
	Operations	\$169,334	\$ 156,109
100805	Svc contracts	\$198,673	\$ 212,449
	Operations	\$238,479	\$ 212,449
100948	Building and Grounds	\$51,085	\$ 50,480
	Personnel	\$51,085	\$ 50,480
	Operations	\$51,085	
100998	Washers & Dryers	\$115,056	\$ 112,608
101003	Small Appliance Rentals	\$9,573	\$ 4,605
101004	Parking Meters	\$414	\$ 732
101008	Card Access	\$-	\$ 30,444
101000	Recycling-871000	\$21,709	\$ 7,500
101164	Univ. Overhead-871000	\$7,500	\$ 1,500,000
101164	Campus Life-871000	\$1,569,950	
	VP for Aux Support	\$175,138	\$ 174,856
101160	Group Office (Greek Life subsidy)	\$35,007	\$ 46,372
101164	Shuttle Support (cameras FY21&22)		\$ 25,000
101167	Res Life Leadership Award	\$1,436,339	\$ 1,039,062
101164	Bonds adm exp-711400	\$2,383	\$ 2,678
101164	Debt Service-851000	\$5,595,627	\$ 8,269,585
101164	Bad debt-719060	\$35,000	\$ 35,000
101164	Collection costs-719070	\$13,685	\$ 14,103
101153	Food svc contract	\$6,824,361	\$ 5,881,841
	Board payments	\$6,688,600	\$ 5,755,196
	Fall/Spring Board	\$6,611,526	\$ 5,716,246
	Summer Board	\$77,075	\$ 38,950
	Houck's Place Note payment	\$50,000	\$ 40,123
	UC Commission	\$60,000	\$ 60,000
	Misc expenses	\$25,761	\$ 26,522

101154	Summer housing	\$34,028	\$	31,708
	Student Labor	\$31,932	\$	30,226
	Operations	\$2,096	\$	1,482
101156	Cheney Operations		\$	160
	Student Labor			
	Operations		\$	160
101158	Dearmont Operations	\$92,936	\$	1,442
	Student Labor	\$1,850		
	Personnel			
	Operations	\$91,086	\$	1,442
101160	Group Operations	\$843	\$	75,716
	Student Labor			
	Personnel			
	Operations	\$843	\$	75,716
101163	Myers Operations	\$10,236	\$	76,087
	Student Labor	\$9,898	\$	14,317
	Personnel		\$	3,081
	Operations	\$338	\$	58,689
101164	Central Office	\$636,916	\$	612,102
	Student Labor	\$65,269	\$	57,044
	Personnel	\$486,582	\$	424,422
	Equipment	\$3,988		
	Operations	\$74,556	\$	127,638
	Scholarships-701410	\$6,521	\$	2,998
102365	Residence Hall Directors	\$254,236	\$	423,423
101987	Professional Training & Development	\$2,064	\$	13,325
101988	Student Staff Training & Development	\$10,794	\$	15,657
101989	Professional Recruitment	\$-	\$	648
101995	Resource Room	\$-		
101991	Learning Communities	\$3,822	\$	14,658
101992	Departmental Programming	\$4,858	\$	3,859
101165	Towers central complex	\$53,590	\$	50,373
	Student Labor	\$44,670	\$	34,122
	Personnel	\$8,686	\$	8,686
	Operations	\$234	\$	7,565
101168	Towers East	\$4,088	\$	84,436
	Student Labor	\$3,000	\$	2,095
	Personnel		\$	4,343
	Operations	\$1,088	\$	77,997
101169	Towers North	\$441	\$	50,100
	Operations	\$441	\$	50,100
101170	Towers South	\$3,267	\$	81,983
	Student Labor	\$3,000	\$	2,490
	Personnel		\$	8,686
	Operations	\$267	\$	70,806

101171	Towers West	\$992	\$	51,477
	Student Labor		\$	(42)
	Personnel			
	Operations	\$992	\$	51,519
102220	Henderson Hall			
	Student Labor			
	Operations			
101172	Property Insurance	\$120,795	\$	89,831
101173	TV Common Area		\$	368
101178	Food Serv. Equip.	\$31,237	\$	37,780
	Equipment			
	Operations	\$31,237	\$	37,780
101179	Cable TV	\$90,272	\$	90,272
103455	Pi Kappa Alpha House	\$6,420	\$	1,353
103454	Sigma Chi House	\$1,531	\$	459
103456	Sigma Nu House	\$2,734	\$	2,088
103457	Sigma Phi Epsilon House	\$1,653	\$	3,620
101182	Hall Council fees	\$63,750		
101183	Room damages	\$52,203	\$	54,845
	Operations	\$52,203	\$	54,845
101184	Readership Program			
101185	Vandiver Hall	\$17,655	\$	87,269
	Student Labor	\$16,760	\$	12,004
	Operations	\$895	\$	75,264
102320	Merick Hall	\$13,597	\$	69,576
	Student Labor	\$13,236	\$	11,053
	Operations	\$360	\$	58,524
102893	LaFerla Hall	\$17,753	\$	80,485
	Student Labor	\$16,736	\$	13,380
	Operations	\$1,018	\$	67,105
103182	Dobbins Center	\$29,247	\$	56,267
	Student Labor	\$20,005	\$	15,890
	Personnel	\$8,878		
	Operations	\$363	\$	40,377
101993	Facility Renewal	\$174,661	\$	2,142,547
	Equipment		\$	-
	Operations	\$174,661	\$	2,142,547
101164	Contingency-719500			
Total Expenses, w/o Contingency		\$21,683,552	\$	24,945,322
Total Expenses, with Contingency		\$21,683,552	\$	24,945,322
Revenue vs. Expenses		\$614,955	\$	(1,336,294)

Room and Board Rate Increases

	<i>Room</i>	<i>Board</i>
FY22	1.95%	3.03%
FY21	1.70%	2.52%
FY20	3.97%	0.49%
FY19	1.53%	2.00%
FY18	1.97%	3.50%
FY17	1.51%	3.51%
FY16	0.50%	0.00%
FY15	0.00%	4.00%
FY14	2.65%	3.50%
FY13	2.40%	5.00%
FY12	3.40%	4.25%
FY11	2.90%	3.10%

Recent Residence Hall Facility Changes, FY18-FY20

- Cheney Hall closed
- Henderson Hall closed
- Dearmont closed

Programming Accomplishments

Move-In Day

In response to the guidelines put in place to protect the campus, the Office of Residence Life staff developed a special move-in process for all residential students to allow for physical distancing while they checked in.

To help reduce the time students would need to spend moving into their room during the official move-in days, a special drop-off week from August 3-7 was developed. Students scheduled a 30-minute timeframe from 9 am-2 pm to move items into their rooms. Staff escorted students and families to their rooms. Keys were not issued, and students were discouraged from unpacking or setting anything up in their room to reduce their time in the hall. The following number of students dropped off items during that week:

	Merick	Group	Myers	Vandiver	Dobbins	East	North	South*	West	LaFerla	Total
8/03/2020	12	14	2	8	0	12	20	0	17	4	89
8/04/2020	14	3	2	12	1	10	9	0	8	7	66
8/05/2020	8	10	2	8	0	9	11	0	12	2	62
8/06/2020	9	13	1	10	0	13	15	0	11	6	78
8/07/2020	14	13	7	14	1	17	22	0	17	2	107
											402

*Towers South was not available due to summer school occupants.

In late July, students were asked to reserve a day and time they would like to check-in during move-in week. Specific days were reserved for select groups (i.e., returning students, new students, Greek, Band, etc.) to move in from Saturday, August 15 through Friday, August 21. Tuesday, August 18 was not made available to allow staff to disinfect/sanitize areas and reset the process for the last few days. The following number of students checked in each day:

	Merick	Group	Myers	Vandiver	Dobbins	East	North	South	West	LaFerla	Total
8/15/2020	6	109	2	1	16	3	6	4	3	7	157
8/16/2020	3	82	3	13	12	8	7	4	3	7	142
8/17/2020	55	9	24	56	42	29	50	67	45	35	412
8/19/2020	49	11	19	43	31	71	49	24	71	44	412
8/20/2020	61	15	30	50	26	113	88	42	63	65	553
8/21/2020	48	1	14	37	20	18	25	65	24	23	275
											1951

Students completed a drive-thru check-in process in the parking lot at the Show Me Center during move-in week. Students and their families passed through a series of tents staffed by members of the Office of Residence Life, Admissions, New Student Programs, and Parking Services to complete their check-in process:

- Welcome/check-in
- COVID health screening
- Registration of their vehicle and parking permit receipt
- Housing assignment verification and move-in placard
- Convocation t-shirt, branded University face-covering kit, and swag bag
- Room key/keycard receipt



After completing the drive-thru check-in process, students were directed to their respective residence halls to unload and move in. Due to health and safety concerns, student volunteers and carts were not available to assist students as they moved in. Students were limited



to two additional family or friends with them to help reduce the number of people within the buildings during move-in. They were encouraged to pack lighter, leave large items at home, and bring carts or dollies with them to help them unload their vehicles.

Special Interest Housing

Select residential communities (e.g., themed and learning communities) are specifically designed to enhance the academic success and residential experience of our on-campus students. This is accomplished by building a community in which they are surrounded by students with similar academic interests, career goals, and/or interests. To support the work of the communities, specialized programming that is designed by staff and faculty from specific academic areas, and providing access to resources that will aid in classroom success.

The Office of Residence Life, in conjunction with our many academic partners, offered the following themed/learning community experiences during the **2020-2021** academic year:

- Agriculture Learning Community
 - 23 first-year and upper-class residents
 - Housed on one wing in LaFerla Hall
 - First-year students took courses together in both Fall and Spring semesters for the first time
- Arts and Media Collective
 - 22 first-year and upper-class residents
 - Housed on two floors in Towers East (male participants were on one floor of the building and female participants on another)
- Business Learning Community
 - 26 first-year students
 - Housed on one wing in LaFerla Hall
- CyberHawks Learning Community (**new for 2020-21**)
 - 21 first-year students
 - Housed on one floor of Towers North
- Cybersecurity/Computer Science/Engineering Community
 - 25 upper-class students for the Department of Computer Science and first-year and upper-class Engineering Students
 - Housed on one wing in LaFerla Hall
- Future Medical Professionals Community
 - 32 first-year and upper-class residents
 - Housed on one wing in LaFerla Hall
- Gender Inclusive Community (**new for 2020-21**)
 - 14 first-year and upper-class residents
 - Housed on one wing in Vandiver Hall
- Honors Learning Community
 - 53 first-year and upper-class residents
 - Housed on two wings (one floor) in LaFerla
- Military/Veterans Community

- 22 first-year and upper-class residents
- Housed on one half of a floor in Vandiver Hall
- Pet-Friendly Community
 - 21 first-year and upper-class students
 - Housed on two floors in Myers Hall
- SEMO StartUps Learning Community
 - 13 upper-class residents
 - Housed on one wing in LaFerla Hall
- Tomorrow's Teachers Learning Community
 - 17 first-year residents
 - Housed on one wing in LaFerla Hall
- Visual and Performing Arts (VPA) Community
 - 161 first-year and upper-class residents
 - Housed at the Dobbins River Campus Center

Student Leadership

Residence Hall Association (RHA) The Residence Hall Association (RHA) is the governing body for students living in the residence halls. This year, RHA struggled to find its footing with a new group of leaders and the campus restrictions in place due to COVID-19 concerns. The executive board struggled to work together cohesively to accomplish their goals, and the group's presence on campus and in the region was quite minimal. The group made very few allocations throughout the year to host or support relevant programs, events, or hall improvements. As a result of the low interest, the advisors determined it best to cease activities halfway through the spring 2021 semester before the election of a new executive board. A plan of action was developed to rebuild and refocus the group in the fall 2021 semester to be more effective in their role as advocates for and representatives of students in the residence halls.



Even though there was a lack of participation in RHA on campus, the former President, Rachel Cundy, completed her responsibilities with the Midwest Affiliate of College and University Residence Halls (MACURH) Regional Board of Directors during the 2020-2021 academic year.

RHA's purpose is to:

- To provide a unified voice for students residing in the University housing facilities.
- To ensure student involvement in the University and Residence Life policy-making process.
- To encourage and facilitate inter-hall cooperation.

- To discuss and promote the issues of students in the residence halls.
- To provide a means for improving physical, educational, social, and cultural standards of living in the residence halls.

The RHA general body is comprised of an Executive Board and representatives from each of the residence halls. One representative is selected for every 75 residents in the residence hall. RHA general body meetings occur each week and are open to all residence hall residents.

FY21 Budget Overview:

Carryover from FY20: \$82,078

Summary Totals:

- Net revenue FY21: \$26,907
- Net expenditures FY21: \$1,214

National Residence Hall Honorary (NRHH) is the premiere honorary supported by the leading international organization advocating for the interests and welfare of residence hall students, while also providing opportunities for their personal growth and development. NRHH strives to provide recognition for individuals who have contributed to the advancement of college and university housing. NRHH membership is limited to the top 1% of students living in the residence halls at Southeast Missouri State University.



Rho Alpha Sigma Alpha Sigma.

Rho Alpha Sigma is a national Resident Assistant honor society. The Alpha Epsilon chapter at Southeast Missouri State University exists to recognize the outstanding efforts of Resident Assistants on our campus. Each year, up to 10% of the total Resident Assistant population on campus may be selected for induction into Rho

Resident Assistant Accomplishments

Resident Assistants, commonly known on campus as RAs, are a diverse group of well-qualified student staff available in each residence hall. RAs work closely with residents to facilitate the academic, personal, and social success of every student in the residence halls. Their position requires them to be a mediator, programmer, counselor, custodian, and mentor to some degree. Most importantly these individuals are expected to be strong community builders and successful students and leaders on campus.

Resident Assistants participated in an online training program, like an online class, over the summer through Canvas, which provided them with basic information related to their position, in preparation for on-campus training in the fall. The online training involves studying PowerPoint

presentations and case studies and responding with a quiz, essay, or forum post. Much of the studied materials are tangible or administrative items that are reviewed during the in-person training in August. In-person training is focused on putting RAs in real-life scenarios they will see in their roles throughout the year. We focus on team building and emotional intelligence while playing out mock scenarios to give RAs a chance to physically witness and participate in handling crisis situations. Spring 2021 RA training focused on assisting new RAs with expectations and requirements and refresher sessions for returning RAs.

Both fall and spring training was held in person on campus. Accommodations were made for physical distancing when the entire staff was together as a large group and staff teams utilized Zoom to participate in presentations from campus partners. While it was strange to see everyone in face-coverings (and difficult to meet people due to physical distancing) the staff found unique ways to complete team-building activities and got a small taste of what it would be like in their classes this year.

FY21 RA Selection

In fall 2020, the alternate candidate list was maintained and utilized to fill the **6** Resident Assistant vacancies for the spring 2021 semester. No additional selection process was run to fill the vacancies from staff members graduating, leaving to complete student teaching responsibilities, etc.

Staffing levels continued to be altered to try and provide the best service and experience that the budget would allow in our communities. A small number of staff members were able to be added back to Towers East and Towers South, as well as an additional staff member added back to Vandiver Hall. Our total staffing in the residence halls for the FY21 year was:

- 5 Professional Hall Directors, 1 Graduate Hall Director
- 70 Resident Assistants
- 4 Senior Resident Assistants
- 4 Chapter Assistants

During spring 2021 the selection committee received **128** applications for the **74** Resident Assistant positions available for the 2021-2022 academic year.

- **38** returning Resident Assistant applications
- **90** eligible new Resident Assistant applications
- **35** individuals offered Alternate positions

In addition to our traditional RA selection process, a process was held to identify **4** Senior Resident Assistants (SRAs) who were strategically placed in Towers East, Towers South, Myers, and Vandiver Halls to provide additional support to the Hall Directors managing two buildings. To

apply for the SRA role, staff members had to have worked with our office as an RA for at least one year, and a higher GPA requirement of 2.85 had to be met. There was a large interest in the position from returning staff:

- **7** applicants for **4** positions.
- All 3 of the remaining applicants were absorbed into traditional RA positions.

A process was also held to identify four Chapter Assistants for the houses in Greek Village. We have continued challenges getting a quality applicant pool presented from the chapters:

- **6** applicants for **4** positions.

RA Academic Success

- 10 Resident Assistants with 4.00 cumulative grade point averages Fall 2020.
- 8 Resident Assistants with 4.00 cumulative grade point averages for Spring 2021.
- 35 Resident Assistants with 4.00 Fall 2020 semester grade point averages.
- 35 Resident Assistants with 4.00 Spring 2021 semester grade point averages.
- 1 Resident Assistant graduated in December 2020.
- 22 Resident Assistants graduated in May 2021.

Southeast Bookstore

Follett Higher Education Group provides bookstore, textbook, and related services to the campus community. The bookstore is currently staffed by two full-time staff and five students team members.



FY 21 Recap

There were many missed sales opportunities from cancelled events in FY21. The return to limited in person events in the spring was not enough to overcome the lost sales.

The shutdown impacted every aspect of our retail operation. The March 2020 closure meant very limited nationwide book buyback. This limited the amount of cost saving used textbooks available for the entire year. Publishers and manufacturers returned in late summer at half capacity. This placed a strain on new textbooks, course supplies, school supplies, electronics, and mask availability. While supply issues have improved, they are not back to full capacity and shortages and slow fulfill rates continued into 2021.

Back to school was drastically impacted by the social distancing measures and by the spring shut down. Most incoming students did not have an on-campus orientation experience and many students were unsure how to find their books and course supplies. The anxiety and confusion lead to much frustration with the online order and pickup process. Southeast Bookstore and Textbook Rental are working together to help create improved communication with current and incoming students so there is a better understanding of the two locations and what we offer.

Mission

The mission of Southeast Bookstore is to enhance and support the educational mission of Southeast Missouri State University by providing essential and affordable educational resources and supplies, quality emblematic and branded merchandise and much more.

Vision

We will achieve our mission by providing:

- A knowledgeable team of dedicated employees
- A respect for our diverse customers
- A clean, safe and accessible establishment for all customers and employees
- A cost effective business with high-quality merchandise at reasonable prices
- A positive working relationship with Southeast Missouri State University and the University Community
- Exceptional customer service

Contract Details

- The agreement auto-renews each year unless either party gives 120 day notice
- The University receives 12.1% of gross revenue up to \$2,500,000 and 13.1% over \$2,500,001. Commission is paid monthly
- Students are permitted to use a “student charge” up to \$500 per semester. These are applied to their student account for purchases at the Bookstore
- The renovation costs are amortized over five years and were approximately \$360,000 in value
 - \$310,000 in capital to renovate the bookstore and stadium fan shop.
 - \$50,000 to reinvigorate the campus bookstore.
- University employees receive a 10% discount on purchases and on the “First Friday” of each month the Bookstore offers a 25% discount on all clothing for any customer
- The Bookstore provides \$5,000 annually for textbook scholarships



Fiscal Summary

Follett’s fiscal year runs April 1 to March 31.

College bookstore sales have been falling over the last 5 years and Southeast Bookstore sales reflect that trend.

- Fiscal Year 2021 sales \$1,032,898
- Fiscal Year 2020 sales \$1,297,747

<i>Sales</i>	<i>FY17</i>	<i>FY18</i>	<i>FY19</i>	<i>FY20</i>	<i>FY21</i>
Used Text	\$52,237	\$57,217	\$43,993	\$33,708	\$20,984
New Text	\$381,601	\$383,182	\$331,574	\$377,207	\$329,314
Digital Text	\$134,557	\$113,413	\$111,934	\$75,284	\$63,807
Gen Books/ Non-emblem	\$56,373	\$40,095	\$39,605	\$32,770	\$24,027
Supplies	\$85,378	\$90,525	\$86,833	\$79,566	\$61,096
Apparel	\$508,231	\$475,366	\$451,048	\$427,569	\$161,569
Gifts	\$75,927	\$72,439	\$66,689	\$60,605	\$40,937
Convenience & Graduation	\$39,999	\$34,505	\$31,810	\$26,594	\$15,133
Technology	\$74,508	\$150,175	\$137,353	\$126,141	\$114,081
Book Rental	\$85,159	\$67,621	\$59,381	\$58,303	\$59,377
Total	\$1,485,969	\$1,484,535	\$1,360,220	\$1,297,747	\$1,032,898

Usage Summary

Presence on Campus

The Bookstore is engaged at various campus events and committees including:

- Admissions Tour coupons for 20% off
- OER Advisory Group
- Partner with Textbook Rental for textbook adoptions
- First Step Info to Go Fair
- Show Me Day Fair
- Athletics Sponsor
- Author Events/book signing
- Bi Annual Faculty and Staff Appreciation event
- New Faculty & Staff Orientation
- Reading Across America events

Challenges and Opportunities

The Bookstore remained open online during the shutdown. Hourly staff was temporarily laid off but the manager continued to work on campus fulfilling online orders, finalizing summer and fall textbook adoptions, ordering textbooks and processing rental textbook check in. Southeast Bookstore also helped fulfill textbook orders for other Follett campus' that were completely shut down – the campus store was not allowed to operate. Hourly staff began returning in May and the store began offering curbside order pick up and rental check in.

There were many missed sales opportunities from cancelled spring events. The current sales for FY21 are down 27% and this sales decline will continue to impact FY21 as missed sales will not be made up by any spring events.

Southeast Bookstore is working to bring in new items featuring the new SEMO Redhawk logo. There will be many opportunities to serve the campus community with the anticipated spring sports programs, campus visits, orientation, and other events. It is our hope that supply delays will be overcome by spring so we can offer a more robust clothing and gift selection.

Student Auxiliary Services

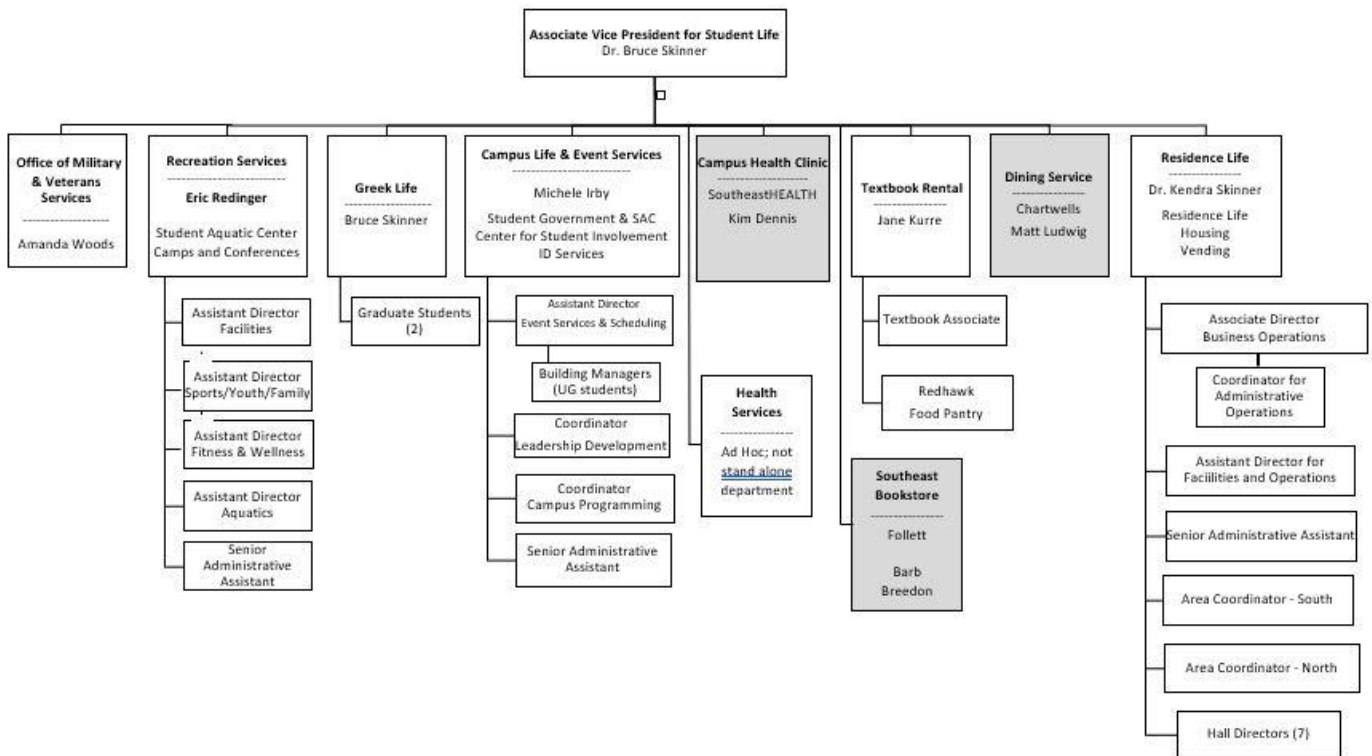
Operating as an administrative office that has supervisory authority for a variety of university offices, Student Auxiliary Services has only one staff member, the Associate Vice President for Student Life. The office works to coordinate the actions of multiple student services offices, including a variety of contracted services.



Organizational Chart

The Division of Enrollment Management and Student Success is led by Dr. Debbie Below, Vice President for Enrollment Management and Student Success. Within the division, eight departments or functional areas are supervised by Dr. Bruce Skinner, Associate Vice President for Student Life, who in turn reports to Dr. Below, Vice President for Enrollment Management and Student Success.

Shaded areas of the organizational chart are contracted services, Chartwells for dining; Follett for Bookstore operations, and the Campus Health Clinic operated by Southeast HEALTH.



Fiscal Summary

	FY21	FY20
Student Labor	\$2,988	\$1,969.27
Faculty Staff Labor	210,762	\$205,778
Operating Expenditures	\$2,359	\$5,870
Ground Transportation	\$292	
Lodging		\$116
Business Meals	\$20.69	\$2
Other Professional Services		\$352
Equipment Repairs		\$238
Postage and Related Expenses	\$5	
Printing and Binding	\$732	\$964
Telephone and Line Charges	\$1,053	1,519
Computer Hardware Software Op Exp	\$241	
Office Supplies		\$1,031
Printing and Photography Suppl		\$226
Technical and Specialized Suppl		\$123
Household Equip Under 1000		\$219
Conferences Meetings Registration		\$1,080.00
Total	\$217,643	\$213,618

Student Government

Student Government (SG) is composed of Executive, Legislative, and Judicial branches. The Executive include the SG President, Vice President, and Treasurer. The Student Government Senate is selected each year in a campus wide election by colleges. Colleges are allocated seats based on the enrollment of each college and students from each college stand for election each spring to represent their college at Student Government. There are additional seats in the Senate for first-year students and for ambassadors. There are currently ambassadors to athletics, the Residence Hall Association, International Student Association, Student Activity Council, Regional campuses and the Student Regent.



Programs and Accomplishments FY21

- \$6000 was internally budgeted to provide \$1000 to each of the college and the First-Year Senators for programmatic and college needs. Some of the programs funded were Hoagies with Humanities and STEM Week.
- Many “traditional” programs/events continued such as Faculty Shoutouts, Senate Scream, the transition banquet and Ice Cream Pigout (although in a different format).
- Continued use and enhancement of social media platforms and surveys to gather feedback from students on various topics. Also engaged with students through giveaways and interactive polls on Instagram.
- Identified funding and began the RFP process for a new student organization management system to replace SELink.
- Create a “point system” to track involvement of Senators outside of weekly Senate Meetings.
- Meet with Information Technology to investigate the process and ability to provide printing accounts for student organizations.
- Collaborated with University administration on Covid guidelines for students and organizations.

Fiscal Summary

	FY21	FY20
General Fee per Credit Hour	\$1.52	\$1.52
Budgeted Revenues	\$334,500	\$306,960
Revenues Received	\$334,761	\$350,821

Fiscal Summary

	FY21	FY20
<u>101130 SG Executive</u>		
Student Labor	\$5,410	\$4,562
Staff	\$40,923	\$46,766
Operations	\$40,652	\$41,209
Total 101130	\$87,286	\$92,537

101120 SGA Student Organizations

Operations	\$868	\$106
Total 101120	\$868	\$106

101131 SGA Discretionary

Operations	\$300	\$6,812
Total 101120	\$300	\$6,812

**Total Expenses &
Transfers:**

Fiscal summary is not complete for FY21. Information provided for FY21 is for informational purposes only in these various indexes and are not a complete summary of all Student Government funds.

Textbook Rental

Since 1915, Southeast Missouri State University has offered a textbook rental program that operates as an auxiliary which provides students the ability to rent their textbooks at a flat rate. Students can take advantage of the flat rate of \$35.00 per course for many undergraduate courses. Graduate students who are enrolled in cross listed 400/600 courses, can also utilize the rental's flat rate course fee program. Textbook rental



is dedicated in providing a convenient, and an economical benefit to help students reach their educational dreams, it is like a scholarship for every student. In addition, Textbook Rental gives back to the University by providing support to student scholarships. Textbook Rental is currently staffed by two full-time University staff and four student employees. Cindy Balsmann, our full time Textbook Associate, received her 25-year service recognition in 2021.

Textbook Rental oversees the operations for the Redhawk Food Pantry, which is housed inside Textbook Rental. The Redhawk Food Pantry provides supplemental food assistance to the University community and is supported entirely by donations from the campus community, registered student organizations, academic departments and offices, and local community members.

Mission

Textbook Rental strives to support Southeast Missouri State University by providing students, faculty, staff, and the University Community superior service and quality products at fair prices through innovative and efficient operations.

We believe it is critical to the mission of the University for our Department to:

1. Provide the right textbooks and course materials, in the right quantity and in a timely manner for all courses offered by the University.
2. Provide significant employment opportunities for students enrolled at the University.
3. Support the various programs offered by individual University units through scholarship support, internships, and donations.
4. Provide the student body a unique opportunity to save money by offering rental textbooks, with a portion of the proceeds going to the Southeast Scholarship Fund.

Year in Review-FY21

Textbook Rental is good for the University and even better for the students! We strive to remain relevant and continue to address the changing needs of our students and faculty. We continue to

look for new ways to ensure students receive the best service and to make obtaining their textbooks an easy process as well as a cost-effective option.

In the summer of 2020, students were not able to pick up their books inside the Textbook Rental department due to the precautions in place to help reduce the spread of the Coronavirus. With the buildings still having restrictions upon those who could enter, we utilized a curbside service for students to pick up their summer textbooks. Students were encouraged to submit an online order for their books, staff would retrieve the books, check them out to the students, bag them up and contact the student to let them know their order was ready and when they arrived, we brought their bag of books to their car. We also offered free shipping to students who were not able to come to the university to pick up their summer textbooks. We also kept the afterhours return chute open 24hrs 7 days a week, because the building was still closed to the public it provided an easy way for students to return their summer books and many were returning their spring 2020 books at this time, which we extended the spring due date to assist students who experienced complications in being able to return them on time due to the Coronavirus. At the time of summer due date returns, students had access to the afterhours return chute and we had signage to alert students to call a specific number for us to pick up their summer book returns curbside. Out of the abundance of caution, we quarantined all returned textbooks for 24 hours before they were replaced into regular stock, which was suggested by the CDC at the time. Conducting our yearly physical inventory was a challenge because it was hard to find additional help, since many students were not on campus and our regular temporary workers were not able to help. We worked with a limited crew, yet we managed to get it finished on time and the extra helpers who did help us was kept on for the summer to help with processing our incoming fall textbooks.

In the fall of 2020, we adapted our processes and in July 2020, we offered an Early Bird Pick Up option to help reduce the traffic inside the department during the busiest time of our year during textbook checkouts. Students placed their textbook order, our team bagged them up, contact the student when they were ready for pick up, and the student could pick up their book's weeks prior to the start of the fall semester. Students could also choose to have their books shipped or requesting curbside delivery. Students were not able to enter the book stacks at this time, for students who came to the department to pick up their books, our team of temporary workers and student workers would retrieve their books and bring them to the checkout computers and the students didn't have to worry about signing for their rental agreement as we used their last 4 digits of their student ID number, and the staff initialed the signature pad. Students were able to finish their fall semester online after the Thanksgiving break. To make returning their books an easy process, we provided two afterhours drop off locations, one located inside the lobby in front of the Bookstore and the other was the book return chute located at the Textbook Rental entrance door, which became available before they left for the Thanksgiving break. We also provided prepaid return shipping labels through FedEx and sent three email return textbook reminders and instructions. Students wanting to pick up their winter session textbooks before they left for Thanksgiving break, had the option to pick up their textbooks beginning the week

before the students left for their break, or have their winter session books shipped, for a reduced shipping charge. To help students get those books before they left, we used social media to remind them to pick up their books and sent each student an email offering this option, as well as providing instructions on how to return their fall textbooks and winter session books.

In the spring of 2021, Textbook Rental continued to offer the Early Bird Pick Up option, and curbside delivery was available upon request, however the amount of those requested options was significantly lower than the previous semester. Students were able to pick up their own textbooks inside the department, which for many students, this was a new experience for them. We had mixed reactions, many students voiced their appreciation when we retrieved their books, and they could 'grab and go' while others liked having the freedom of picking out their own books. We offered a variety of options for students to return their spring semester textbooks, and we extended the return due date. Students could return their books in person inside Textbook Rental, or request using the curbside service. We offered two afterhours drop off locations, and to the delight of many students, we returned to Towers Lobby during finals week to accept book returns. We did not offer a prepaid return label, however many students opted to ship their books back.

During the first week of the spring 2021 semester, the VA department informed us that their process had changed, and students enrolled in the Chapter 31 program are to purchase their books and can no longer rent their books in order for them to be reimbursed. The VA department required a signed receipt or acknowledgement that the books were charged to their account. We quickly created a form for the students to complete and we worked with Student Financial Services to work out the details on how to submit the form and if they can share their student list who are enrolled in the VA Chapter 31 program. We are happy to assist our Veteran students to make their experience an easy one.

During the first half of the summer of 2021 textbook rental check outs went back to our regular process, and students adapted well to going back to getting their own books.

Usage Summary

There are textbooks for 1,253 courses available, which is 28 less courses than in FY20. The current textbook inventory on hand was 37,261 at the end of FY21, a decrease of 1.5% from FY20. The replacement value of these texts is estimated at \$3,368,794.16 a decrease of 3% from FY20.



- A total of 46,882 textbooks were rented for FY21, this is including all locations.
- A total of 53,939 textbooks were rented for FY20, this is including all locations.

Showing a decrease of 15%, the result of an increase in digital course materials being required by certain course sections instead of the textbook, the unavailability of physical textbooks from certain publishers as well as the growing competition from online sources and the reduction in enrollment.

- In cases where students are already paying for an e-text that accompanies a required access code or through the Follett Access program, the campus no longer purchases physical textbooks for these courses to assist students in reducing their expenses and to avoid paying for duplicate materials.

Usage Summary-FY21								
	Summer 2020 (Included for comparison only)		Fall 2020		Spring 2021		Summer 2021	
	Students	Books	Students	Books	Students	Books	Students	Books
MAIN	1505	2437	6685	21627	5835	19135	1220	1896
CCC			124	300	102	280	13	18
Kennett	3	5	144	461	126	352	10	13
Sikeston	12	18	333	760	263	624	12	18
Poplar Bluff			42	116	24	50	4	6
High School				853		360		6
Departments		1		29		17		1
Faculty		15		32		43		7
Military		1		5	1	1		0

Regional Campuses

- Textbook Rental works in partnership with the Regional Campuses in the distribution and collection of Textbook Rental textbooks at the Sikeston, Kennett, Poplar Bluff, and the Cape College Center Campus locations.
- Each location carries inventory of our textbooks to provide easy access to textbooks for students enrolled in classes at those locations.
 - Combined, the four Regional Campus locations house 2039 textbooks of our total inventory.
- Beginning with the fall 2020 semester, the courier service that delivers to the regional campuses was reduced to only a few selected days during the month. Working closely with Nathan Bullock, we arranged a schedule with Central Receiving that would be in the best interest of the regional campus students to ensure they would be able to pick up their books the first day of class.

High School Dual Credit Partners

- We provided textbooks to 25 high schools who are participating in dual credit/early college credit programs.

- High Schools participating in Dual Credit/Early College credit programs, requested 1973 textbooks for FY20, and requested 1158 textbooks for FY21, a decrease of 70%. We are seeing an increase in High Schools requiring their students to pay the rental fee as opposed to the school paying the rental fees and requesting all books needed. High School students are ordering or coming into the department to pick up their books. It is possible that not all books used for Dual Credit/Early College credit program is included in the requested amount.
- During the 2021 Fiscal year, we did not have the typical number of textbook requests due to the closure of many schools or they opted to conduct online learning and used alternative methods.

Online Distance Students

- Students who take online courses at Southeast, have the option to visit Textbook Rental to rent their textbooks in person or to use our online order form located on our website and choose to have their books shipped to their home or to a Regional Campus location. A per order shipping charge of \$9.95 for the first book and \$3.95 for each additional book, is a convenient and economical option for online students who request to have their textbooks shipped to their homes. Students who live near a regional campus site can request their books to be shipped and picked up at the location site free of charge.
- Textbook Rental processed 3003 online orders in FY20 and in FY21 we processed 3595, an increase of 20%. The increase is due to the increase of online orders submitted for the Early Bird Pickup option processed during July 1, 2020, through June 30, 2021, due to the Coronavirus pandemic precautions.

Fiscal Summary

	FY21	FY20
Revenue		
Taxable Rental Income	\$1,149,418	\$1,241,852
Fines	\$29,563	\$17,925
Textbook Sales	\$220,799	\$242,902
Non-taxable Sales	\$117,099	\$20,925
Non-taxable Rentals	\$24,767	\$31,441
Total Revenue	\$1,541,647	\$1,555,046
Expenses		
Student Payroll	\$20,313	\$18,005
Staff Payroll	\$126,679	\$121,833
Equipment		

Total Operation Expenses	\$7,503	\$10,489
University Rent & Overhead	\$261,435	\$260,000
Auxiliary Support	\$31,525	\$38,468
Textbook Purchases	\$617,730	\$999,448
Other expenses	\$3,331	\$9,751
Bad Debt	\$5,000	\$5,000
Inventory Adjustment	\$133,401	(\$33,075)
Total Expenses	\$1,207,897	\$1,430,209
Fund Net	\$333,750	\$124,837

Fund Balance

	<i>Revenue</i>	<i>Expenses</i>	<i>Net</i>	<i>Fund Balance</i>	<i>Inventory Balance</i>	<i>FB less inventory</i>
FY21	\$1,541,647	\$1,207,897	\$333,750	\$3,041,292	\$797,014	\$2,244,278
FY20	\$1,555,046	\$1,463,285	\$124,837	\$2,707,542	\$930,416	\$1,777,126
FY19	\$1,597,384	\$1,362,860	\$62,396	\$2,582,705	\$897,340	\$1,685,365
FY18	\$1,886,490	\$1,753,816	\$99,013	\$2,520,309	\$1,072,214	\$1,448,095
FY17	\$2,029,677	\$1,722,143	(\$12,938)	\$2,421,296	\$1,105,277	\$1,316,019

Programs and Accomplishments

Campus Involvement

- We provided four free rental fees for spring 2020 certificate as a prize for Testing Services Integrity week event.
- Present at the New Faculty & Staff Orientation fair.
- Present at the Show Me Day Event.
- First Step presentation and present at the “Info to Go” fair.
- Attended the OER Advisory group meetings.
- Attended the Distant Student Services Advisory Group meetings.
- Partnered with Follett Southeast Bookstore for textbook adoptions.

Accomplishments and Challenges

In the spring of 2020, the University shut down due to the Coronavirus pandemic. While most offices were closed, the Manager of Textbook Rental continued to work on site to maintain the day-to-day operations which included:

- Fulfilled online orders for students enrolled in 2nd 8week classes.
- Orders that needed to be shipped were taken to the local UPS store, which we provided students with free shipping.
- Collected and processed fall textbook adoptions and requisitions.
- Ordered summer textbooks to meet enrollment.
- Worked with Dr. Bruce Skinner and FedEx to create a simple to use prepaid return shipping label for students to use to return their spring textbooks.
- Refurbished the large textbook return box, purchasing a new chute to be installed and ensured it would be available at the end of the spring semester.
- With two after hour drop off locations available 24/7, the manager would provide daily removal of books when necessary. All returned books would be placed in quarantine for 3 days before being returned to the stacks or available to be rented out.



In April, Cindy Balsmann and two student workers returned to help get summer student web orders processed, then another student worker, returned in May. To keep everyone safe we began with limited hours and no overlapping scheduled work times for our student workers.

With everything contact free, we managed to ship out all the summer web orders, providing free shipping and provided curbside pickup and spring book return as another option available for the students. We faced many obstacles such as closed publishing companies, limited availability of used or new books to purchase, additional expenses and adjustments to our procedures. Without our university organizations helping to shelve books during finals week, and our regular temporary workers checking in returns, we were hard pressed to find help, but we managed to find a few good workers who helped during that time.

Because of the overall uncertainty of this unprecedented situation, many of our used book buyers were not willing to travel to come to our department to purchase our discontinued stock, and by the time most buyers felt comfortable to venture out, the value of the books had dropped which caused a great loss of revenue for our department.

We are proud of our Textbook Rental program, and we strive to make it even better. With the hard work and dedication of our team, we will continue to adapt to meet the needs of today's student and we have learned how to face any crisis that may arise. Our team is committed to

providing exceptional service to our university community, I am very proud of our dedicated staff during this difficult time.

The Redhawk Food Pantry

- On March 20, 2017, the Redhawk Food Pantry officially opened their door for the first time.
- The pantry is located inside Textbook Rental, they are available: Monday through Friday, 1:00pm-4:00 pm. The pantry is staffed with one Student Manager and student volunteers.

Pantry Usage

- 2021; 158 guests
- 2020; 226 guests
- 2019; 513 guests
- 2018; 380 guests
- 2017; 146 guests
- The pantry is supported entirely by donations and strives to provide supplemental food assistance for those who find themselves struggling with food insecurities within the University community.
- The pantry not only provides food for its clients, but it is also a valuable resource to educate the University community on the current issues of food insecurity amongst their peers.



Appendix A

1999-Present Homecoming Parade, Window Art, Banner, and Yard Art Winners

Year	Parade Float Winners			Window Painting/*Banner/Yard Art		
	1 st	2 nd	3 rd	1 st	2 nd	3 rd
1999	Pi Kappa Alpha/ Alpha Xi Delta	Sigma Phi Épsilon/ Delta Delta Delta	Phi Delta Theta/ & Alpha Chi Omega			
2000	Sigma Nu/ Alpha Delta Pi Phi Eta Sigma Dare Program	Pi Kappa Alpha & Alpha Chi Omega Horticulture Club	Sigma Phi Épsilon & Tri Sigma			
2001	Alpha Delta Pi/ Pi Kappa Alpha Baptist Student Union Dare Program	Sigma Sigma Sigma/Alpha Chi Omega/Sigma Phi Épsilon Air Force ROTC	Sigma Nu/Gamma Phi Beta/ Sigma Tau Gamma	Pi Kappa Alpha/Alpha Delta Pi	Phi Delta Theta/Alpha Xi Delta	Gamma Phi Beta/ Sigma Nu/ Sigma Tau Gamma
2002	Pi Kappa Alpha/Gamma Phi Beta Airforce ROTC Dare Program	Alpha Chi Omega & Sigma Tau Gamma & Theta Xi Baptist Student Union	Delta Delta Delta & Sigma Nu	Alpha Delta Pi/Sigma Chi Alpha Kappa Psi	Pi Kappa Alpha & Gamma Phi Beta Baptist Student Union	Delta Delta Delta & Sigma Nu
2003	Sigma Tau Gamma/Delta Delta Delta Alpha Kappa Psi Dare Program	Pi Kappa Alpha & Alpha Delta Pi	Sigma Phi Epsilon & Gamma Phi Beta	Pi Kappa Alpha & Alpha Delta Pi	Sigma Nu & Sigma Sigma Sigma	Alpha Xi Delta, Theta Xi, Sigma Chi
2004	Delta Delta Delta/ Pi Kappa Alpha Alpha Kappa Psi Cape Shriners	Alpha Delta Pi/ Sigma Chi/ Phi Delta Theta	Alpha Xi Delta/ Sigma Tau Gamma/Theta Xi	Alpha Delta Pi/ Sigma Chi/ Phi Delta Theta	Delta Delta Delta/ Pi Kappa Alpha	Gamma Phi Beta/ Lambda Chi Alpha/ Delta Chi
2005	Alpha Chi Omega/ Pi Kappa Alpha Student Government/Stude nt Activities Council/Rowdy Crowd Girl Scout Troop #134 Sigma Nu & Alpha Delta Pi	Sigma Phi Epsilon/ Delta Delta Delta	Alpha Delta Pi/ Sigma Nu	Pi Kappa Alpha & Alpha Chi Omega	Sigma Nu & Alpha Delta Pi	Southeast Bookstore
2006	Sigma Nu/Sigma Sigma Sigma/Gamma Phi Beta Gamma Sigma Sigma Safe House for Women Gamma Sigma Sigma	Alpha Delta Pi/Sigma Phi Epsilon/Delta Sigma Theta	Delta Delta Delta/Delta Chi/Lambda Chi Alpha	Gamma Phi Beta/Sigma Nu/Sigma Sigma Sigma	Sigma Alpha Iota	Delta Delta Delta/Delta Chi/Lambda Chi Alpha
2007	Sigma Phi Epsilon/ Alpha Xi Delta/ Sigma Sigma Sigma RHA Veterans	Alpha Delta Pi/ Sigma Tau Gamma/ Sigma Chi Gamma Sigma Sigma	Lambda Chi Alpha/ Alpha Chi Omega	Alpha Xi Delta/Sigma Sigma Sigma/Sigma Phi Epsilon	Delta Delta Delta/Sigma Nu	Alpha Delta Pi/Sigma Chi/Sigma Tau Gamma

2008	Alpha Xi Delta/Pi Kappa Alpha Alpha Kappa Psi Semo ShowStoppers	Delta Delta Delta/ Sigma Phi Epsilon TIED 2nd Place with Alpha Chi Omega/ Delta Chi/ Sigma Tau Gamma		Alpha Delta Pi/ Lambda Chi Alpha/Theta Xi	Alpha Xi Delta/Pi Kappa Alpha	Delta Delta Delta/ Sigma Phi Epsilon
2009	Delta Delta Delta/ Sigma Chi Gamma Sigma Sigma	Alpha Chi Omega/ Sigma Phi Epsilon Alpha Kappa Psi	Alpha Delta Pi/ Pi Kappa Alpha	Alpha Xi Delta/ Delta Chi/ Sigma Tau Gamma Gamma Sigma Sigma	Alpha Chi Omega/ Sigma Phi Epsilon American Society of Interior Designers	Delta Delta Delta/ Sigma Chi Alpha Kappa Psi
2010*	Alpha Chi Omega/Pi Kappa Alpha Gamma Sigma Sigma	Delta Delta Delta/ Sigma Tau Gamma/ Delta Chi Alpha Kappa Psi	Gamma Phi Beta/ Sigma Nu SAC	Delta Delta Delta/ Sigma Tau Gamma/ Delta Chi Alpha Kappa Psi	Alpha Xi Delta/ Sigma Chi/ Theta Xi Gamma Sigma Sigma	Alpha Delta Pi/ Sigma Phi Epsilon
2011	Alpha Xi Delta/Sigma Nu Sigma Alpha Iota and Phi Mu Alpha	Alpha Chi Omega/Sigma Chi/Lambda Chi Alpha	Alpha Delta Pi/Delta Chi/Sigma Tau Gamma	Delta Delta Delta/Pi Kappa Alpha Sigma Alpha Iota and Phi Mu Alpha	Alpha Xi Delta/Sigma Phi Epsilon	Alpha Delta Pi/Delta Chi/Sigma Tau Gamma
2012	Alpha Chi Omega/Delta Chi/Theta Xi Student Activities Council/Campus United Way/Phi Beta Lambda	Delta Delta Delta/Sigma Nu Alpha Kappa Psi	Alpha Delta Pi Alpha Phi Omega	Gamma Phi Beta/Lambda Chi Alpha/Pi Kappa Alpha Student Activities Council/Campus United Way/Phi Beta Lambda	Delta Delta Delta/Sigma Nu Sigma Alpha Iota	Sigma Sigma Sigma/Gamma Sigma Sigma Alpha Phi Omega
2013	Gamma Sigma Sigma/ Pi Kappa Alpha Phi Beta Lambda/Alpha Kappa Psi	Lambda Chi Alpha/ Delta Delta Delta/ Theta Xi Alpha Phi Omega	Gamma Phi Beta/ Sigma Chi Chinese Student Scholar Association	Lambda Chi Alpha/ Delta Delta Delta/ Theta Xi Student Activities Council/ RHA	Gamma Sigma Sigma/ Pi Kappa Alpha Phi Beta Lambda, Alpha Kappa Psi	(Tie for 2 nd) Alpha Delta Pi, Sigma Nu
2014	Alpha Delta Pi, Pi Kappa Alpha, Theta Xi (class A) Phi Beta Lambda, Sigma Alpha Iota (class B)	Gamma Phi Beta, Sigma Nu, Delta Chi (class A)	Sigma Sigma Sigma, Lambda Chi Alpha (class A)			
2015	Alpha Xi Delta & Lambda Chi Alpha (class A) Sigma Alpha Iota & Phi Mu Alpha (class B)	Alpha Chi Omega & Pi Kappa Alpha (class A) Phi Beta Lambda (class B)	Gamma Sigma Sigma & Phi Delta Theta (class A) Alpha Phi Omega (class B)	Delta Delta Delta, Delta Chi, & Sigma Tau Gamma	Alpha Xi Delta & Lambda Chi Alpha	Alpha Chi Omega & Pi Kappa Alpha
2016	Alpha Xi Delta and Pi Kappa Alpha (Class A)	Gamma Phi Beta, Phi Delta Theta and Lambda Chi Alpha (Class A)	Alpha Chi Omega and Sigma Chi (Class A)	Sigma Chi and Alpha Chi Omega (Division 1)	Alpha Delta Pi, Sigma Tau Gamma and Delta Chi (Division 1)	Lambda Chi Alpha, Phi Delta Theta and Gamma Phi Beta (Division 1)
2016	Phi Beta Lambda and National Residence Hall Honorary (Class B)	Alpha Phi Omega (Class B)	Alpha Chi Sigma (Class B)	SAC (Division 2)	Alpha Chi Sigma (Division 2)	Phi Beta Lambda and NRHH (Division 2)
2017	Alpha Delta Pi & Pi Kappa Alpha (Class A) Phi Beta Lambda (Class B)	Alpha Phi, Alpha Xi Delta, & Phi Delta Theta (Class A) Alpha Phi Omega & Alpha Chi Sigma (Class B)	Alpha Chi Omega, Sigma Nu, & Sigma Tau Gamma (Class A) National Residence Hall Honorary (Class B)	Alpha Delta Pi & Pi Kappa Alpha (Division 1) National Residence Hall Honorary (Division 2)	TIE Gamma Phi Beta & Tau Kappa Epsilon Alpha Chi Omega, Sigma Nu, & Sigma Tau Gamma (Division 1) Gamma Sigma Sigma (Division 2)	Delta Delta Delta & Lambda Chi Alpha (Division 1) Phi Beta Lambda (Division 2)

2018	Lambda Chi Alpha, Theta Xi, & Alpha Chi Omega (Class A) Phi Beta Lambda (Class B)	Alpha Delta Pi & Sigma Chi (Class A) Gamma Sigma Sigma (Class B)	Sigma Sigma Sigma & Phi Delta Theta (Class A) Kappa Beta Gamma (Class B)	Alpha Delta Pi & Sigma Chi (Division 1) Kappa Beta Gamma (Division 2)	Sigma Nu, Alpha Xi Delta, & Sigma Tau Gamma (Division 1) Gamma Sigma Sigma (Division 2)	Sigma Sigma Sigma & Phi Delta Theta (Division 1) NRHH & RHA(Division 2)
2019	Alpha Delta Pi and Lambda Chi Alpha, "Peter Pan" (Class A) Gamma Sigma Sigma and Kappa Beta Gamma, "Willie Wonka and the Chocolate Factory" (Class B)	Alpha Xi Delta and Sigma Chi, "Cloudy With A Chance of Meatballs" (Class A) Lutheran Student Fellowship, "The Chronicles of Narnia (Class B)	Sigma Sigma Sigma, Theta Xi and Tau Kappa Epsilon, "The Magic Treehouse (Class A) Alpha Phi Omega, "A Series of Unfortunate Events" (Class B)			
2020	Homecoming 2020 parade and most events cancelled because of COVID-19					
2021*	Alpha Xi Delta, Pi Kappa Alpha, Delta Chi	Alpha Chi Omega and Sigma Chi	Sigma Sigma Sigma and Phi Delta Theta	Gamma Phi Beta and Tau Kappa Epsilon	Alpha Chi Omega & Sigma Chi (tied for second)	Sigma Sigma Sigma and Phi Delta Theta (tied for second)

*FY22 info added as it was known at the time of this FY21 annual report development.

- Black Lettering indicates Division I winners
- Red Lettering indicates Class B/Division II winners
- Blue Lettering indicates Community Class winners
- Green Lettering indicates the "Sponsors Pick" for the parade. The winner received a plaque and was selected by Southeast Bookstore (Parade Sponsor). This award began in 2005 and ended after 2006

Appendix B

1996-Present Man and Woman of the Year and Finalists; Overall Homecoming winner

<u>Year</u>	<u>Man of the Year</u>	<u>Women of the Year</u>	<u>M&WOTY Finalists</u>	<u>Overall Winner</u>		
				<u>1st</u>	<u>2nd</u>	<u>3rd</u>
1996			Matt Blake, Trevor Bossert, Jason Legrand, Mark Oberhauser, Ryan Ozinga, Traci Hackstadt, Emily Holt, Kime Jenne, Christie Johnson, Angela Lauer			
1997			Kevin Cook, Jason Lane, Matt Prins, Tim Schoolfield, Gary Wrigley, Jeanne Ball, Danna Dockery, Shanna Dusablon, Candy Hart, Lisa Ronsick			
1999	Brian Cochran	Katie Malz	Drew Griffin, Kelly Moss, Kate Parks, Amanda Rainey, Stephanie, Slaten, Jon Litner, Kristopher McConnell, Doug McDermott			
2000	Garvin Ambrose	Beth DeGeeter	Jeremy Butler, Derrick Feldmann, Aaron Spratt, Brad Wolf, Natalie Conant, Nicole Conant, Tanya Efken, Jenny Lane			
2001	Tom Foley	Meredith McDowell	James Backer, Paul Dobbins, Travis Partney, Kevin Schmieder, Sarah Berkbigler, Kimberly Fallert, Erin Hamm, Kelly Lambing			
2002	Brian Kohlberg	Brooke Adams	Jake Lohse, Christie Bernds, Brian Privett, Brian Schuberg	Pi Kappa Alpha/ Gamma Phi Beta Alpha Kappa Psi	Sigma Nu/Delta Delta Delta BSU	Sigma Phi Epsilon/ Alpha Delta Pi Airforce ROTC
2003	Matt Imgrund	Katie Fink	Adam Schaefer, Travis Stevens, Jared White, Brian Whitehead, <u>Laura Hockensmith</u> , <u>Carissa Sims</u> , Crystal Uhe, Sally Muraski (Tied runner up)			
2004	Nicholas Riordan	Candice Coffey	Dan Friedrich, Dane Huxel, Jake Risk, John	Delta Delta Delta/ Pi	(tie) Alpha Delta Pi/	

			Taylor, Amanda Trainor, Jen Cross, Natalie Renn, Teresa Layton	Kappa Alpha	Sigma Chi/ Phi Delta Theta Sigma Sigma Sigma/ Sigma Nu	
2005	Joseph Gordon	Jennifer Clarkston	Amy Brookover, Kevin Bray, Nathan Burch, Rebecca Langan, John Loesel, Keith Robinson II, Danielle Zust, Kelly Wogtech			
2006	James Wells	Rachel Padgett	<u>Jennifer Gilbert</u> , Katie LoRusso, Adam Hanna, Megan Matter, James Schnepel, <u>Andrew Tilmon</u> , Elsa Sode, James Wells			
2007	Matthew Knickman	Jeanette Holloway	Nathan Saverino, Ali Harvey, <u>Scott Crean</u> , Andrea Branum, Michael Painton, <u>Brooke Privett</u> , Robert Muller, Nikki Eggleston	Alpha Xi Delta/ Sigma Sigma Sigma/ Sigma Phi Epsilon		
2008	Billy Garrett	Sarah Snyder	Nicholas Alexander, Jodie Amschler, Ed Beckman, <u>Victoria Boren</u> , Leni Fluegge, Jeff Grapperhaus, <u>Scott Kaverman</u> , Shatrasha Stone	Alpha Xi Delta/ Pi Kappa Alpha		
2009	Tony Dentman	Emily Brown	Molly Davis, Dana Gordon, Amanda Hardwick, <u>Shamone Mitchell</u> , Kurtis Cappel, Eric Johnson, Timothy Lucas, <u>Nolan Ryan</u>	Alpha Chi Omega/ Sigma Phi Epsilon	Alpha Xi Delta/ Delta Chi/ Sigma Tau Gamma	Delta Delta Delta/ Sigma Chi
2010	Benjamin Hooe	Ashley Weder	Nicole Egelhofer, Brittany Gholson, Amy Kreher, <u>Denise Schmidt</u> , <u>Jared Henrichs</u> , Bryan Kujawa, Daniel Schuenemeyer, Ben Tiller	Delta Delta Delta/ Sigma Tau Gamma/ Delta Chi Alpha Kappa Psi	Alpha Chi Omega/ Pi Kappa Alpha Gamma Sigma Sigma	Gamma Phi Beta/ Sigma Nu
2011	Patrick Vining	Katie Herring	<u>Caroline Burdin</u> , Emilee Glueck, Emilee Hargis, Alexandra Kaufman, <u>Drew Reilly</u> , Egbar Ozenkoski, Lukumanu Sodamade, Zachary Tucker	Alpha Chi Omega/Sig ma Chi/Lambda Chi Alpha	Alpha Delta Pi, Delta Chi and Sigma Tau Gamma	Gamma Phi Beta and Sigma Phi Epsilon
2012	Derek	Leshay	<u>Mary Bauer</u> , Madeline	Delta Delta	Alpha Chi	Gamma Phi

	May	Mathis	McKenzie, Olivia Plumlee, Megan Stackle, <u>Dominic Cicerelli</u> , Corey Culbreath, Chris Dzurick, Greg Felock,	Delta/Sigma Nu Student Activities Council/Campus United Way/Phi Beta Lambda	omega/Delta Chi/Theta Xi Alpha Kappa Psi	Beta/Lambda Chi Alpha/Pi Kappa Alpha Sigma Alpha Iota and All Girls Rock
2013	Benny Dorris	Lacey Balsmann	Lacey Balsmann, Ashley Harris, Jill Irvin <u>Mollie Laramore</u> , Jamie Norrenberns, Benny Dorris, Andrew Lerch, Nick Maddock, <u>Craig Robinson</u> , Austin Wendt	Lambda Chi Alpha/ Delta Delta/ Theta Xi Phi Beta Lambda/Alpha Kappa Psi	Gamma Sigma Sigma/ Pi Kappa Alpha Student Activities Council/RHA	Gamma Phi Beta/ Sigma Chi Alpha Phi Omega
2014	Weston Blankenship	Jessica Mues	Amber Cason, Weston Blankenship, Taylor Cox-Hoffman, A.J. Collins, Jessica Mues, Zach Cox, <u>Lydia Ness</u> , <u>Ethan Hochstein</u> , Caitlin Silger, Kyle Jacobsmeyer	Sigma Sigma Sigma/Lambda Chi Alpha (class A) Phi Beta Lambda/Sigma Alpha Iota (class B)	Delta Delta Delta, Sigma Phi Epsilon (class A)	Alpha Delta Pi, Pi Kappa Alpha, Theta Xi (class A)
2015	Evan Siers	Harman Malhi	Andrea Cox, <u>Lauren Denault</u> , Catalina Mahr, Harman Malhi, Amy McEvoy, Parker Butler, Bradford Hutcheson, <u>Peter Jacobsen</u> , Julian Sanders, Evan Siers	Alpha Xi Delta & Lambda Chi Alpha (Div. 1) Phi Beta Lambda (Div. 2)	Delta Delta Delta, Delta Chi & Sigma Tau Gamma (Div. 1) Sigma Alpha Iota & Phi Mu Alpha (Div. 2)	Alpha Chi Omega & Pi Kappa Alpha (Div. 1) Alpha Phi Omega (Div. 2)
2016	Keyeon Pitts	Raven Lawhorn	Julia Brady, <u>Lexi Hightaian</u> , Raven Lawhorn, Peyton Mogley, and Destiny Tulo-Lang, Wesley Cox, Dylan Kennedy, Collin Kramer, Keyeon Pitts, and <u>Brandon Robbers</u>	Alpha Xi Delta and Pi Kappa Alpha (Div. 1) Phi Beta Lambda and National Residence Hall Honorary (Div. 2)	Delta Delta Delta, Sigma Nu and Theta Xi (Div. 1) Alpha Chi Sigma (Div. 2)	Alpha Chi Omega and Sigma Chi (Div. 1) Alpha Phi Omega (Div. 2)
2017	Juan Salas	Emily Daly	Angela Backer, <u>Amanda Carpenter</u> , Emily Daly, Kara Hartnett, Emma Hoover,	TIE Lambda Chi Alpha &	Alpha Chi Omega, Sigma Nu, &	Alpha Phi, Alpha Xi Delta, & Phi

			Matthew Hayes, Juan Salas, Evan Schmidt, <u>Jake Scott</u> , Bhanu Sehgal	Delta Delta Delta Pi Kappa Alpha & Alpha Delta Pi (Div. 1) FBLA & Phi Beta Lambda (Div. 2)	Sigma Tau Gamma (Div.1) National Residence Hall Honorary (Div. 2)	Delta Theta (Div. 1) Gamma Sigma Sigma (Div. 2)
2018	Zack Koeller	Danielle Bergfeld	Michelle VanZandt, Kaetlin Lamberson, Grace Lester, Alexis Dilg, Raymond Killian, Caleb Ellenburg, Luke Legrand, Brendan Scholl	Alpha Delta Pi Sigma Chi (Div. 1) Gamma Sigma Sigma (Div. 2)	Alpha Chi Omega, Lambda Chi Alpha, & Theta Xi (Div. 1) NRHH & RHA (Div. 2)	Alpha Xi Delta, Sigma Nu, & Sigma Tau Gamma (Div. 1) Kappa Beta Gamma (Div. 2)
2019	Justin Jacobs	Francesca Bucci	Elwood Voss, Mo Muzzey, Emma DeRousse, Roshelle Tauro, of Maharashtra, Margy Tepen,; Dominick Gillette; Anthony Shepard, Jacob Wilkinson,	Alpha Xi Delta and Sigma Chi (Div 1) Gamma Sigma Sigma and Kappa Beta Gamma (Div 2)	Alpha Delta Pi and Lambda Chi Alpha (Div 1)	Alpha Chi Omega and Sigma Phi Epsilon (Div 1)
2020	Justin Tuschhoff	Alexys Bergschneider	Kyra Minder, Patti Meadors, Annie Martin, Alexys Bergschneider, Kate Appleman, Justin Tuschhoff, Zach Tate, Dougie Gray, Kade Felmming, Andrew Behrmann	Parade and other events were cancelled in because of COVID-19		
2021*	Garion Beatty	Kylie Noe	Anna Carpenter, Madelyn Johnson, Kylie Noe, Morhahn Peterson, Grace Powderly, Garion Beatty, Reed Carlson, Nolan Knupp, Logan Phillips, Samuel Wright	Alpha Xi Delta, Pi Kappa Alpha & Delta Chi	Alpha Chi Omega and Sigma Chi	Sigma Sigma Sigma and Phi Delta Theta

*FY22 info added as it was known at the time of this FY21 annual report development.

- Black Lettering indicates Division I winners
- **Red Lettering** indicates Class B/Division II winners
- Underlined names in the M&WOTY categories indicate runners-up.

Appendix C
NPHC Step/Yard Show Winners

Year	Sorority	Fraternity
2015		
2016		
2017		
2018	Sigma Gamma Rho Sorority, Inc.	
2019	Delta Sigma Theta Sorority, Inc.	Phi Beta Sigma Fraternity, Inc.
2020	Zeta Phi Beta Sorority, Inc.	Alpha Phi Alpha Fraternity, Inc.

Appendix C
Greek Governing Council Presidents

Semester	IFC President	NPC President	NPHC President
Fall 22	William Yuede (ΣΝ)	Lauren Pokey (ΑΞΔ) fall Jacqueline Jansen (ΣΣΣ) spg	
Spring 22			Zy Williams (ΖΦΒ)
Fall 21	Justin Tuschhoff (ΦΔΘ)	Sarah Katsion (ΓΦΒ)	Kenise Hoard (ΔΣΘ)
Spring 21			Raven Cole (ΣΓΡ)
Fall 20	Kade Flemming (ΣΝ)	Sadie Sottos (ΑΞΔ)	Raven Cole (ΣΓΡ)
Spring 20			Lo Simmons (ΖΦΒ)
Fall 19	Tom Oleson (ΣΦΕ)	Margy Tepen (ΔΔΔ)	Jaleea Hudson-Wilson (ΔΣΘ)
Spring 19			
Fall 18	Brian DiMariano (ΠΚΑ)	Grace Lester (ΓΦΒ)	
Spring 18			
Fall 17	Brian Lamb (ΛΧΑ)	Emma Hoover (ΑΧΩ)	Justin Robinson (ΙΦΘ)
Spring 17			
Fall 16	Sean Thomas (ΣΝ)	Claire Simmonds (ΓΦΒ)	Andrea Cox (ΔΣΘ)
Spring 16			
Fall 15	Parker Butler (ΛΧΑ)	Taylor Shinabargar (ΣΣΣ)	
Spring 15			
Fall 14	Weston Blankenship (ΣΝ)	Caitlin Silger (ΔΔΔ)	Josh Price (ΦΒΣ)
Spring 14			
Fall 13	Nick Maddock (ΛΧΑ)	Katy First (ΑΞΔ)	
Spring 13			
Fall 12	Ryan Manning (ΣΝ)	Olivia Plumlee (ΑΞΔ)	
Spring 12			
Fall 11	Nolan Ryan (ΛΧΑ)	Amy Kreher (ΔΔΔ)	Melvin Bond (ΦΒΣ)
Spring 11			
Fall 10	Blake Essner (ΣΤΓ)	Paige Adkisson (ΑΧΩ)	Corey Hawkins (ΦΒΣ)
Spring 10			
Fall 09	Ed Beckmann (ΣΧ)	Stephanie Black (ΔΔΔ)	Nicholas Alexander
Spring 09			

Fall 08	Matt Knickman (ΛΧΑ)	Jennifer Belmar (ΣΣΣ)	(ΑΦΑ)
Spring 08			
Fall 07	Adam Schultz (ΣΦΕ)	Jen Clarkston (ΔΔΔ)	
Spring 07			Russell Crawford (ΑΦΑ)
Fall 06	Nate Burch (ΣΦΕ)	Laura Hammond (ΑΔΠ)	
Spring 06			
Fall 05	Mardy Leathers (ΛΧΑ)	Teresa Layton (ΔΔΔ)	Tamekia DeVoil (ΔΣΘ)
Spring 05			
Fall 04	Kenneth Lee Schlitt (ΘΞ)	Stephanie Eddy (ΓΦΒ)	
Spring 04			
Fall 03	Nick Weirciak (ΛΧΑ)	Sarah Beard (ΑΧΩ)	
Spring 03			
Fall 02	Tom Foley (ΣΦΕ)	Tara Benson (ΣΣΣ)	
Spring 02			
Fall 01	Bryan Sauter (ΠΚΑ)	Jenny Lane (ΑΔΠ)	
Spring 01			
Fall 00		Katie Malz (ΑΔΠ)	
Spring 00			
Fall 99	Justin Buck (ΠΚΑ)	Stacey Yaeger (ΑΔΠ)	
Spring 99			
Fall 98	Ben Scott (ΦΔΘ)	Kim Jenne (ΔΔΔ)	
Spring 98			
Fall 97		Stephanie Slape (ΑΧΩ)	
Spring 97			

Appendix D

Greek Fraternity and Sorority of the Year (from 2002-2016 the chapter of the year award was called the *Fraternal Award for Excellence* and multiple chapters could win. Beginning with 2017 the Five Star Program was implemented).

2021*	Delta Delta Delta	Sigma Nu		
2020	Delta Delta Delta	Phi Delta Theta		
2019	Alpha Delta Pi	Sigma Nu		
2018	Delta Delta Delta	Phi Delta Theta		
2017	Delta Delta Delta	Sigma Phi Epsilon		
2016	Alpha Delta Pi	Lambda Chi Alpha		
2015	Alpha Delta Pi	Delta Chi		
2014	Alpha Delta Pi	Sigma Phi Epsilon		
2013				
2012				
2011				
2010	Alpha Delta Pi	Gamma Phi Beta	Lambda Chi Alpha	
2009	Gamma Phi Beta	Lambda Chi Alpha		
2008	Gamma Phi Beta	Lambda Chi Alpha		
2007	Alpha Chi Omega	Alpha Delta Pi	Gamma Phi Beta	Lambda Chi Alpha
2006	Delta Delta Delta	Gamma Phi Beta		
2005	Alpha Chi Omega	Alpha Delta Pi	Sigma Phi Epsilon	
2004	Alpha Delta Pi	Alpha Chi Omega	Sigma Phi Epsilon	
2003	Alpha Chi Omega			
2002	Alpha Chi Omega			

* The awards for calendar year 2021 were decided prior to printing of the FY21 report and were therefore included in this annual report.

Appendix E

Greek Five Star Category Awards Winners. For each category a fraternity and sorority are selected as the overall category winner.

- Academic Success
- Chapter Management
- Membership Development and Education
- Civic and Community Engagement
- Harm Reduction/Risk Management

<i>Year</i>	<i>Academic Success</i>	<i>Chapter Management</i>	<i>Membership Development and Education</i>	<i>Civic and Community Engagement</i>	<i>Harm Reduction/Risk Management</i>
2021*	Delta Delta Delta	Gamma Phi Beta	Delta Delta Delta	Alpha Delta Pi	Gamma Phi Beta
2021*	Sigma Nu	Phi Delta Theta	Sigma Phi Epsilon	Sigma Nu	Sigma Nu
2020	Delta Delta Delta	Gamma Phi Beta	Delta Delta Delta	Alpha Delta Pi	Delta Delta Delta
2020	Sigma Nu	Phi Delta Theta	Sigma Nu	Phi Delta Theta	Phi Delta Theta
2019	Alpha Delta Pi	Delta Delta Delta	Sigma Sigma Sigma	Sigma Sigma Sigma	Delta Delta Delta
2019	Sigma Nu	Sigma Nu	Sigma Nu	Phi Delta Theta	Sigma Nu
2018	Delta Delta Delta	Alpha Chi Omega	Delta Delta Delta	Alpha Chi Omega	Alpha Delta Pi
2018	Phi Delta Theta	Theta Xi	Phi Delta Theta	Sigma Nu	Phi Delta Theta
2017	Delta Delta Delta	Delta Delta Delta	Delta Delta Delta	Sigma Sigma Sigma	Gamma Phi Beta
2017	Phi Delta Theta	Sigma Nu	Sigma Nu	Sigma Phi Epsilon	Phi Delta Theta

NPHC Chapter of Excellence Awarded to one NPHC chapter each year as part of the Five Star Awards program.

2021 *	Delta Sigma Theta Sorority, Inc.
2020	Delta Sigma Theta Sorority, Inc.

Greek Advocate Award Awarded to one University or community member that supports Greek students and is not affiliated, including in an advising role of any chapter at Southeast.

2021 *	Sandy Hinkel, Registrar Office
2020	Trae Mitten, Dean of Student Office
2019	Holly Ritter, Office of Residence Life

* The awards for calendar year 2021 were decided prior to printing of the FY21 report and were therefore included in this annual report.

Appendix F

Greek Week Pairings, Themes, and Nonprofit Partners

Spring Semester/Director	Chapters	Theme	Local Nonprofit Partner
Spring 2021 Joey Kedl (Phi Delta Theta)	Alpha Chi Omega and Pi Kappa Alpha	<i>Shark Boy and Lava Girl</i>	Honorable Young Mens Club
	Alpha Delta Pi and Phi Delta Theta	Captain America	Community Partnerships of Southeast Missouri
	Alpha Phi and Sigma Phi Epsilon	Superman	Hope for One More
	Alpha Xi Delta and Sigma Nu	Wonder Woman	SEMO NASV
	Delta Delta Delta and Sigma Chi	Guardians of the Galaxy	Voices for Children
	Gamma Phi Beta, Delta Chi, and Theta Xi	The Incredibles	One City
	Sigma Sigma Sigma, Lambda Chi Alpha, and Tau Kappa Epsilon	Spiderman	The Boys and Girls Clubs of Southeast Missouri
Spring 2020 Connor Wakeland (Pi Kappa Alpha) Greek Week suspended from COVID	Alpha Chi Omega and Sigma Chi	<i>Big Bang Theory</i>	Boys and Girls Club
	Alpha Delta Pi and Sigma Phi Epsilon	<i>The Office</i>	Community Caring Council
	Alpha Phi	<i>Full House</i>	Honorable Young Mens Club
	Alpha Xi Delta	<i>Parks and Rec</i>	SEMO NASV
	Delta Delta Delta and Lambda Chi	<i>Friends</i>	One City
	Gamma Phi Beta, Phi Delta Theta, and Theta Xi	<i>Brooklyn 99</i>	Voices for Children
	Sigma Sigma Sigma and Sigma Nu	<i>How I Met Your Mother</i>	Hope for One More
Spring 2019 Zack Koeller (Phi Delta Theta)	Alpha Chi Omega, Sigma Tau Gamma, and Tau Kappa Epsilon	<i>Americas Got Talent</i>	Voices for Children
	Alpha Delta Pi and Pi Kappa Alpha	<i>Keeping Up with the Kardashians</i>	One City
	Alpha Phi and Sigma Nu	<i>Fear Factor</i>	SEMO NASV
	Alpha Xi Delta and Lambda Chi Alpha	<i>Hells Kitchen</i>	Boys and Girls Clubs of Southeast Missouri
	Delta Delta Delta and Phi Delta Theta	<i>Survivor</i>	Honorable Young Mens Club
	Gamma Phi Beta and Sigma Phi Epsilon	<i>The Bachelor</i>	Hope for One More

	Sigma Sigma Sigma, Sigma Chi, and Theta Xi	<i>My Strange Addiction</i>	Community Caring Council
Spring 2018 Kimberly Baich (Alpha Delta Pi)	Alpha Chi Omega and Pi Kappa Alpha		
	Alpha Delta Pi and Lambda Chi Alpha		
	Alpha Phi and Phi Delta Theta		
	Alpha Xi Delta and Sigma Phi Epsilon		
	Delta Delta Delta and Sigma Nu		
	Gamma Phi Beta and Sigma Chi		
	Sigma Sigma Sigma, Delta Chi, and Tau Kappa Epsilon		
Spring 2017			

